

DEPARTMENT OF THE ARMY TECHNICAL MANUAL

DIRECT SUPPORT AND GENERAL SUPPORT  
 MAINTENANCE REPAIR PARTS AND SPECIAL TOOLS LIST  
 (INCLUDING DEPOT MAINTENANCE REPAIR PARTS  
 AND SPECIAL TOOLS)  
 COMPRESSOR UNIT, RECIPROCATING, POWER-DRIVEN,  
 FLAMETHROWER, 3 1/2 CFM, AN-M4  
 FSN 1040-592-8560

Headquarters, Department of the Army, Washington, D.C.  
 26 April 1972

Current as of 3 January 1972

Section	I. INTRODUCTION		
	II. REPAIR PARTS LIST		
Group	100. Canvas.....	5	1
	200. Water Separator .....	5	2
	300. Fan.....	7	8
	400. Cooler .....	8	4
	500. Compressor and Relief Valve.....	9	5, 6, 7, 8, 9
	600. Engine.....	16	10
	700. Frame and Fuel Tank .....	18	11
Section	III. SPECIAL TOOLS LIST-Not applicable		
	IV. FEDERAL STOCK NUMBER AND REFERENCE NUMBER INDEX		

SECTION I. INTRODUCTION

1. Scope

This manual lists repair parts required for the performance of direct support, general support and depot maintenance of the AN-M4 compressor unit.

2. General

This Repair Parts and Special Tools List divided into the following sections:

a. *Repair Parts List-Section II.* A list of repair parts authorized at the direct support, general support, and depot levels for the performance of maintenance.

The list also includes parts which must be removed for the replacement of the authorized parts. Parts list is composed of functional groups in ascending numerical sequence, with parts in each group listed in figure and item number sequence.

b. *Special Tools List-Section III.* Not applicable.

c. *Federal Stock Number and Reference Number Index -Section IV.*

A list in ascending numerical sequence, of all Federal stock numbers appearing in the listing, followed by a list in alphanumeric sequence, of all reference numbers appearing in the listings.

\*This manual supersedes TM 3-1040-210-35P, 20 August 1963.

This copy is a reprint which includes current pages from Change 1.

Federal stock numbers and reference numbers are cross-referenced to each illustration figure and item number appearance.

### 3. Explanation of Columns

The following provides an explanation of columns found in the tabular listing:

*a. Source, Maintenance, and Recoverability Codes (SMR).*

(1) Source code. Indicates the source for the listed items. Source codes are:

<i>Code</i>	<i>Explanation</i>
P.....	Repair parts, special tools, and test equipment supplied from the GSA/DSA, or Army supply system, and authorized for use at indicated maintenance categories.
P2....	Repair parts, special tools, and test equipment which are procured and stocked for insurance purposes because the combat or military essentiality of the end item dictates that a minimum quantity be available in the supply system.
P9....	Assigned to items which are NSA design controlled: unique repair parts, special tools, test, measuring, and diagnostic equipment, which are stocked and supplied by the Army COMSEC Logistic System and which are not subject to the provisions of AR 380-41
P10..	Assigned to items which are NSA design controlled: special tools, test, measuring, and diagnostic equipment for COMSEC support, which are accountable under the provisions of AR 380-41, and which are stocked and supplied by the Army COMSEC Logistic System.
M.....	Repair parts, special tools, and test equipment which are not procured or stocked, as such, in the supply system but are to be manufactured at indicated maintenance levels.
A.....	Assemblies which are not procured or stocked as such, but are made up of two or more units. Such component units carry individual stock numbers and descriptions, are procured and stocked separately and can be assembled to form the required assembly at indicated maintenance categories.
X.....	Parts and assemblies that are not procured or stocked because the failure rate is normally below that of the applicable end item or component. The failure of such part or assembly should result in retirement of the end item from the supply system.
X1....	Repair parts which are not procured or stocked. The requirement for such items will be filled by the next higher assembly or component.
X2....	Repair parts, special tools, and test equipment which are not stocked and have no foreseen mortality. The indicated maintenance category requiring such repair parts will attempt to obtain the parts through cannibalization or salvage. The item may be requisitioned, with exception data, from the end item manager for immediate use.

<i>Code</i>	<i>Explanation</i>
G.....	Major assemblies that are procured with PEMA funds for initial issue only as exchange assemblies at DS and GS level. These assemblies will not be stocked above the DS and GS level or returned to depot supply level.

**NOTE**

Cannibalization or salvage may be used as a source of supply for any items source coded above except those coded X1 and aircraft support items as restricted by AR 700-42.

(2) *Maintenance code.* Indicates the lowest category of maintenance authorized to install the repair part and/or use the special tool or test equipment for each application. Capabilities of higher maintenance categories are considered equal or better. Maintenance codes are:

<i>Code</i>	<i>Explanation</i>
C.....	Crew/operator maintenance
O.....	Organizational maintenance
F.....	Direct support maintenance
H.....	General support maintenance
D.....	Depot maintenance

(3) *Recoverability code.* Indicates whether unserviceable items should be returned for recovery or salvage. Items not coded are nonrecoverable. Recoverability codes are:

<i>Code</i>	<i>Explanation</i>
R.....	Applied to repair parts, (assemblies and components), special tools, and test equipment which are considered economically repairable at direct and general support maintenance levels. When the item is no longer economically repairable, it is normally disposed of at the GS level. When supply considerations dictate, some of these repair parts may be listed for automatic return to supply for depot level repair as set forth in AR 7101. When so listed, they will be replaced by supply on an exchange basis.
S.....	Repair parts, special tools, test equipment, and assemblies which are economically repairable at DSU and GSU activities and which normally are furnished by supply on an exchange basis. When items are determined by a GSU to be uneconomically repairable, they will be evacuated to a depot for evaluation and analysis before final disposition.
T.....	Higher dollar value recoverable repair parts, special tools, and test equipment which are subject to special handling and are issued on an exchange basis. Such items will be repaired or overhauled at depot maintenance activities only. No repair may be accomplished at lower levels.
U.....	Repair parts, special tools, and test equipment specifically selected for salvage by reclamation units because of precious metal content, critical - materials, high dollar value, or reusable casings or castings.

*b. Federal Stock Number.* Indicates the Federal stock number assigned to the item and will be used for requisitioning purposes.

*c. Description.* Indicates the Federal item name

and a minimum description required to identify the item. The last line indicates the reference number followed by the applicable Federal Supply Code for Manufacturer (FSCM) in parentheses. The FSCM is used as an element in item identification to designate manufacturer or distributor or government agency, etc., and is identified in SB 70842. Items that are included in kits and sets are listed below the name of the kit or set with quantity of each item in the kit or set indicated in front of the item name.

*d. Unit of Measure (U/M).* Indicates the standard or basic quantity by which the listed item is used in performing the actual maintenance function. This measure is expressed by a two-character alphabetical abbreviation, e.g., ea, in., pr, etc. and is the basis used to indicate quantities and allowances in subsequent columns. When the unit of measure differs from the unit of issue, that will satisfy the required units of measure will be requisitioned.

*e. Quantity Incorporated in Unit.* Indicates the quantity of the item used in the breakout shown on the illustration figure, which is prepared for a functional group, subfunctional group, or an assembly. A "V" appearing in this column in lieu of a quantity indicates that no specific quantity is applicable, e.g., shims, spacers, etc.

*f. 30-Day DS/GS Maintenance Allowances.*

(1) An asterisk (\*) entered in the direct support (DS) and/or general support (GS) subcolumns indicates that the repair part is authorized for use at that level, and will be requisitioned on an "as required" basis.

(2) The repair parts authorized at the DS/ GS levels are for the maintenance mission at these levels.

(3) Requirements for repair parts stockage and for distribution to supported units will be based on demand and determined in accordance with AR 710-2.

*g. 1-Year Allowance Per 100 Equipments/ Contingency Planning Purposes.* An asterisk (\*) entered in this column indicates that the total quantity of the repair part required for distribution and contingency planning purposes will be based on demand data.

*h. Report Maintenance Allowance Per 100 Equipments.* An asterisk (\*) entered in this column indicates that the repair part is authorized for use at the depot level, and will be requisitioned on an "as required" basis.

*i. Illustration.* This column is divided as follows:

(1) *Figure number.* Indicates the figure number of the illustration on which the item is shown.

(2) *Item number.* Indicates the callout number

used to reference the item on the illustration.

#### 4. Special Information

a. Action change codes indicated in the left-hand margin of the listing page denote the following:

N - indicates an added item

C - Indicates a change in data.

R - indicates a change in FSN only.

b. Repair parts kits appear as the last entries in the repair parts listing for the group or assembly to which they apply.

c. The following publications pertain to the AN-M4 compressor and its components:

LO 3-1040-210-10.....Lubrication Order

TM 3-1040-210-12 .....Organizational Maintenance Manual

TM 3-1040-210-20P .....Organizational Maintenance Repair Parts and Special Tools List

TM 3-1040-210-34 .....Direct Support and General Support Maintenance Manual

#### 5. How to Locate Repair Parts

a. When Federal stock number or reference number is unknown:

(1) *First.* Using the Table of Contents, determine the functional group within which the repair part belongs, i.e., Canvas, Water Separator. This is necessary since illustrations are prepared for functional groups, and listings are divided into the same groups.

(2) *Second.* Find the illustration covering the group to which the repair part belongs.

(3) *Third.* Identify the repair part on the illustration and note the illustration figure and item number of the repair part.

(4) *Fourth.* Using the Repair Parts Listing, find the functional group to which the repair part belongs and locate the illustration figure and item number noted on the illustration.

b. When Federal stock number or reference number is known:

(1) *First.* Using the Index of Federal Stock Numbers and Reference Numbers, find the pertinent Federal stock number or reference number.

(2) *Second.* Using the Repair Parts Listing, find the functional group of the repair part and the illustration figure number and item number referenced in the Index

of Federal Stock Numbers and Reference Numbers.

**6. Abbreviations**

<i>Abbreviations</i>	<i>Explanation</i>
crs .....	corrosion resistant steel
syn .....	synthetic
pltd .....	plated
NPT.....	National Pipe Thread
HP.....	Horsepower
NF.....	National Fine

**7. Reporting of Equipment Publication Improvements**

The reporting of errors, omissions, and recommendations for improving this publication should be submitted on DA Form 2028 (Recommended Changes to Publications) and forwarded direct to Commanding Officer Edgewood Arsenal, ATTN: SMUEA-DE-ETL, Edgewood Arsenal, MD. 21010.

**Section II. REPAIR PARTS LIST**

Action	(1) SMR Code		(2) Federal Stock No.	(3) Description		(4) Unit of Meas	(5) Qty Inc in Unit	(6) 30-Day DS Maint Allowance			(7) 30-Day GS Maint Allowance			(8) 1-Yr alw per 100 equip cntgcy	(9) Depot maint alw per 100 equip	(10) Illustration		
				Reference Number & Mfg Code	Usable on Code			(a)	(b)	(c)	(a)	(b)	(c)			(a)	(b)	
								1-20	21-50	51-100	1-20	21-50	51-100			Fig. No.	Item No.	
C	P	O	1040-083-2606	GROUP 100-CANVAS COVER ASSEMBLY, COMPRESSOR D68-13-1551 (81361)		ea	1	*	*	*	*	*	*	*	*		1	1
C	P	F	4730-203-3132	CLAMP, HOSE 2.625 in. to 3.062 id AN737TW98-114 (88044)		ea	1	*	*	*	*	*	*	*	*		1	2
C	P	O	5306-879-2800	BOLT, SHOULDER stl, hex hd, 1/4-28x .750 in. lg B81-1-6878 (81361),		ea	2	*	*	*	*	*	*	*	*		1	3
C	P	O	1040-083-2607	STRAP ASSEMBLY, SHOULDER, RIGHT B81-1-6878 (81361)		ea	2	*	*	*	*	*	*	*	*		1	4
C	P	O	1040-863-7451	STRAP ASSEMBLY, WAIST D81-1-6878 (81361)		ea	1	*	*	*	*	*	*	*	*		1	5
C	P	O	5310-880-5977	WASHER, FLAT CRES, 0.750 IN. DIA, 1 1/4 IN. bolt size MS15795-811 (96906)		ea	6	*	*	*	*	*	*	*	*		1	6
C	P	O	5310-982-4988	NUT, HEXAGON stl, 1/4-28 in. MS21045C4 (96906)		ea	6	*	*	*	*	*	*	*	*		1	7
C	P	O	1040-093-2614	HARNES, BACK REST D68-13-1570-(81361)		ea	1	*	*	*	*	*	*	*	*		1	8
C	P	O	4020-233-6555	CORD, COTTON Type I or II, Class 2, Size 4, 8 strands, green MIL-C-2533 (81349)		ft	5	*	*	*	*	*	*	*	*		1	9
C	P	O	1040-083-2608	STRAP, ASSEMBLY, SHOULDER, LEFT D81-1-6872-1 (81361)		ea	1	*	*	*	*	*	*	*	*		1	10
C	P	F	1040-083-2615	GROUP 200 - WATER SEPARATOR SEPARATOR ASSEMBLY, WATER D68-13-1545 (81361)		ea	1	*	*	*	*	*	*	*	*		2	
C	X2	H		BAFFLE, ASSEMBLY 873561 (33525)		ea	1										2	1
C	P	F	R	4820-977-7664	VALVE, RELIEF 873738-2250 (33525)		1	*	*	*	*	*	*	*	*		2	2
C	X1	H		VALVE, COVER 242683-2A (33525)			1										2	2A

Action	(1)		(2)	(3)		(4)	(5)	(6)			(7)			(8)	(9)	(10)	
	SMR Code		Federal Stock No.	Description		Unit of Meas	Qty Inc in Unit	30-Day DS Maint Allowance			30-Day GS Maint Allowance			1-Yr alw per 100 equip cntgcy	Depot maint alw per 100 equip	Illustration	
				<i>Reference Number &amp; Mfg Code</i>	<i>Usable on Code</i>			(a) 1-20	(b) 21-50	(c) 51-100	(a) 1-20	(b) 21-50	(c) 51-100			(a) Fig. No.	(b) Item No.
C	X1	H		SPRING, MAIN 208298 (33525)		1		See Kit 1040-972-2823							2	3	
C	X1	H		RETAINER 242668WA (33526)		1									2	3A	
C	X1	H		BALL 81515 (33525)		1		See Kit 1040-972-2828							2	4	
C	X1	H		PLUNGER 242667-4A (33625)		1									2	4A	
C	X1	H		PACKING, PREFORMED 5302-0100 (33525)		1		See Kit 1040-972-2323							2	5	
C	X1	H		NUT, LOCK 242644-5A (33525)		1									2	5A	
C	X1	H		UNION 242662-5B (33525)		1									2	5B	
C	X1	H		SEAT 208290 (33525)		1		See Kit 1040-972-2323							2	6	
C	X1	H		SPRING, SEAT 211730 (33525)		1		See Kit 1040-972-2323							2	7	
C	X1	H		PACKING, PREFORMED 5302 0909- (33525)		1		See Kit 1040-972-2223							2	8	
C	X1	H		FITTING 208287 (33526)		1		See Kit 1040-972-2323							2	9	
C	X1	H		SEAL, LOCKWIRE 211793 (33625)		2		See Kit 1040-9792-2323							2	10	
C	X1	H		LOCKWIRE MS20995C32 (96906)		2		See Kit 1040-972-2323							2	11	
C	P	F	5330-531-2070	PACKING, PREFORMED syn rubber, 0.365 in. dia hole NAS617-4 (80205) NAS617-4 (80205)		ea	3	*	*	*	*	*	*	*	2	12	
C	P	F	4780-977-7663	ADAPTER 213356 (33525)		ea	1	*	*	*	*	*	*	*	2	13	
C	P	H	1040-083-2618	CAP, TANK, SEPARATOR, WATER 272258 (33525)		ea	1	*	*	*	*	*	*	*	2	14	
C	X2	H		SCREW, TAPPING, THREAD FORMING MS24621-2 (96906)		ea	2								2	15	
C	X2	H		PLATE, IDENTIFICATION 243595 (33525)		ea	1								2	16	
C	P	F	5310-275-3683	WASHER, LOCK stl, 0.795 In. dia hole, 1.260 od		ea	1	*	*	*	*	*	*	*	2	17	

Action	(1)		(2)	(3)		(4)	(5)	(6)			(7)			(8)	(9)	(10)	
	SMR Code	Federal Stock No.	Description	Reference Number & Mfg Code	Usable on Code	Unit of Meas	Qty Inc in Unit	30-Day DS Maint Allowance			30-Day GS Maint Allowance			1-Yr alw per 100 equip cntgcy	Depot maint alw per 100 equip	Illustration	
								(a) 1-20	(b) 21-50	(c) 51-100	(a) 1-20	(b) 21-50	(c) 51-100			(a) Fig. No.	(b) Item No.
C	P	F	5330-081-3986	MS35335-40 (96906) PACKING, PREFORMED syn rubber, 2.250 in. id, 0.125 in. thk 5303-600 (33525)		ea	1	*	*	*	*	*	*	*	*	2	18
C	P	F	5330-246-6403	RETAINER, PACKING plastic, 0.360 in. id, 0.694 in. od, 0.061 in. thk MS28773-04 (96906)		ea	1	*	*	*	*	*	*	*	*	2	19
C	P	F	4730-277-6372	LOCKNUT, TUBE FITTING stl, 7/16-20 thd, 11/16 in. across flats AN6289 4(88044)		ea	1	*	*	*	*	*	*	*	*	2	20
C	P	H	4730-231-3026	ELBOW, TUBE stl, 7/16-20, 37° angle AN883-4 (88044)		ea	1	*	*	*	*	*	*	*	*	2	21
C	P	F	1040-084-0438	FITTING, SPRAY DIRECTING B68-13-1567 (81361)		ea	1	*	*	*	*	*	*	*	*	2	22
C	P	F	2910-083-2620	VALVE, NEEDLE brass body, cres spindle, 1/8 NPT 213347 (33525)		ea	1	*	*	*	*	*	*	*	*	2	23
C	P	F	5310-282-7834	NUT, PLAIN HEXAGON aluminum alloy, 7/8-14 AN924-10D (88044)		ea	1	*	*	*	*	*	*	*	*	2	24
C	P	F	5310-616-3056	WASHER, LOCK stl, ext teeth, 7/8 in. bolt size MS35335-41 (96906)		ea	1	*	*	*	*	*	*	*	*	2	25
C	P	H	1040-083-2616	SHELL, SEPARATOR, WATER 272259 (33525)		ea	1	*	*	*	*	*	*	*	*	2	26
C	P	H	1040-972-2323	REPAIR KIT, VALVE 803842 (33525) 1-SPRING, MAIN 1-BALL 1-PACKING, PREFORMED 1-SEAT 1-SPRING, SEAT 1-PACKING, PREFORMED 1-FITTING 2-SEAL, LOCKWIRE 2-LOCKWIRE	GROUP 300-FAN	ea	1	*	*	*	*	*	*	*	*	2	3
																2	4
																2	5
																2	6
																2	7
																2	8
																2	9
																2	10
																2	11
C	P	H	1040-977-7667	CLAMP ASSEMBLY, LONG 842317 (33525)		ea	8	*	*	*	*	*	*	*	*	3	1
C	P	F	5310-685-3744	WASHER, FLAT cres, 0.395 in. od, 0.184 in. dia hole, 0.22 in. thk AN960C8 (88044)		ea	7	*	*	*	*	*	*	*	*	3	2

Action	(1) SMR Code		(2) Federal Stock No.	(3) Description  <i>Reference Number &amp; Mfg Code</i> <i>Usable on Code</i>		(4) Unit of Meas	(5) Qty Inc in Unit	(6) 30-Day DS Maint Allowance			(7) 30-Day GS Maint Allowance			(8) 1-Yr alw per 100 equip cntgcy	(9) Depot maint alw per 100 equip	(10) Illustration	
								(a)	(b)	(c)	(a)	(b)	(c)			(a)	(b)
								1-20	21-50	51-100	1-20	21-50	51-100			Fig. No.	Item No.
C	P	F	5310-941-6440	NUT, SELF-LOCKING, HEXAGON aluminum alloy, 8-32 MS21083D08 (96906)		ea	3	*	*	*	*	*	*	*	*	3	3
C	P	H	1040-084-2927	FAN 290664 (33525)		ea	1				*	*	*	*	*	3	4
C	P	H	5310-902-9369	NUT, SELF-LOCKING, HEXAGON stl, 1/2-20 MS21083N8 (96906)		ea	1				*	*	*	*	*	3	5
C	P	H	1040-970-8426	GUARD, FAN 290641 (33525)		ea	1				*	*	*	*	*	3	6
C	X2	H		WASHER, SQUARE 213516 (33525)		ea	4									3	7
C	X2	H		SCREW, MACHINE 5292-1106 (33525)		ea	4									3	8
C	P	H	5320-117-6808	RIVET, SOLID aluminum alloy, 0.097 in. dia, 0.322 in. lg MS20470DS-5 (96906)		ea	4				*	*	*	*	*	3	9
C	X2	H		PLATE, IDENTIFICATION 3.250 in. lg, 0.500 in. w x 0.020 in. thk 243595 (33525)		ea	1									3	10
C	X2	H		PUSH ON NUT PH094 (77122)		ea	4									3	11
C	P	H	5306-258-5608	SCREW, DRIVE stl, pltd, 0.118 in. dia, no. O.size 1/4 in. lg. MS21318-9 (96906)		ea	2				*	*	*	*	*	3	12
C	X2	H		PLATE, INSTRUCTION 245805 (33525)		ea	1									3	13
C	P	H	1040-977-7668	CLAMP ASSEMBLY, SHORT 842818 (33525)		ea	1				*	*	*	*	*	3	14
C	P	H	1040-084-4439	BRACKET, LONG, FAN GUARD 272576 (33525)	GROUP 400-COOLER	ea	3				*	*	*	*	*	4	1
C	P	F	5310-659-6211	WASHER, FLAT cres, 0.260 in. od, 0.130 in. hole dia, 0.028 in. thk MS15795-803 (96906)		ea	3				*	*	*	*	*	4	2
C	P	F	5305-940-9472	SCREW, MACHINE cres, 1/4-20 x 0.438 lg MS36275-278 (96906)		ea	3				*	*	*	*	*	4	3
C	P	H	1040-972-6142	INTERCOOLER, SECOND STAGE		ea	1				*	*	*	*	*	4	4



Action	(1)		(2)	(3)		(4)	(5)	(6)			(7)			(8)	(9)	(10)	
	SMR Code	Federal Stock No.	Description	Reference Number & Mfg Code	Usable on Code	Unit of Meas	Qty Inc in Unit	30-Day DS Maint Allowance			30-Day GS Maint Allowance			1-Yr alw per 100 equip cntgcy	Depot maint alw per 100 equip	Illustration	
								(a) 1-20	(b) 21-50	(c) 51-100	(a) 1-20	(b) 21-50	(c) 51-100			(a) Fig. No.	(b) Item No.
C	P	H	4730-186-9963	892168 (33526) ELBOW, PIPE TO TUBE aluminum, 1/4 NPT to 1/4 od tube MS20822D (96906)		ea	1				*	*	*	*	*	4	5
C	X2	F		SCREW, SELF-LOCKING 1/4-20 x 5/8 lg 218455 (33525)		ea	1									4	6
C	P	H	1040-974-3737	BRACKET, FAN 272404 (33525)		ea	1				*	*	*	*	*	4	7
C	P	H	5306-225-9087	BOLT, MACHINE stl, hex hd, 5/16-24 x .750 lg MS90726-32 (96906)		ea	4	*	*	*	*	*	*	*	*	4	8
C	P	H	5310-880-5977	WASHER, FLAT cres, 0.750 in. od, 0.312 dia hole MS15795-811 (96906)		ea	4				*	*	*	*	*	4	9
C	P	F	4730-186-9961	ELBOW, PIPE TO TUBE aluminum, 1/8 NPT to 1/4 tube size MS208224D (96906)		ea	2	*	*	*	*	*	*	*	*	4	10
C	P	H	1040-972-5141	INTERCOOLER, FIRST STAGE 892167 (33525)		ea	1				*	*	*	*	*	4	11
C	P	H	1040-972-5146	AFTERCOOLER 892170 (33525)		ea	1				*	*	*	*	*	4	12
C	X2	F		ELBOW 804302 (33525) GROUP 500-COMPRESSOR AND RELIEF VALVE		ea	1									4	13
C	P	H	1040-979-9307	COMPRESSOR 892133 (33525)		ea	1				*	*	*	*	*	5	1
C	P	H	1650-699-0522	VALVE, SAFETY RELIEF 802259 (33525)		ea	1				*	*	*	*	*	5	2
C	X1	H		PACKING, PREFORMED 803843 O RING (33525)			1	See Kit 1040-972-2822								6	1
C	X1	H		SHIM 808843SHIM (33525)			1	See Kit 1040-972-2822								6	2
C	P	H	5310-087-4571	WASHER, RECESSED aluminum, 0.950 dia hole, 1.580 od 213383 (33525)		ea	1				*	*	*	*	*	6	3
C	P	H	1040-992-1130	PLUNGER AND CYLINDER ASSEMBLY 842291 (33525)		ea	1				*	*	*	*	*	6	4
C	P	H	5305-988-5848	SCREW, CAP, SOCKET HEXAGON 5561-1034 (33525)		ea	4				*	*	*	*	*	6	5
C	X1	H		RING, RETAINING 80384 RETAINING RING (33525)			1	See Kit 1040-972-2322								6	6
C	P	H	1040-977-9471	HEAD ASSEMBLY, THIRD 842293 (33525)		ea	1				*	*	*	*	*	6	7

Action	(1)		(2)	(3)		(4)	(5)	(6)			(7)			(8)	(9)	(10)	
	SMR Code	Federal Stock No.	Description	Reference Number & Mfg Code	Usable on Code	Unit of Meas	Qty Inc in Unit	30-Day DS Maint Allowance			30-Day GS Maint Allowance			1-Yr alw per 100 equip cntgcy	Depot maint alw per 100 equip	Illustration	
								(a) 1-20	(b) 21-50	(c) 51-100	(a) 1-20	(b) 21-50	(c) 51-100			(a) Fig. No.	(b) Item No.
C	X1	H		GASKET, HEAD 803843 HEAD GASKET (33525)		ea	1	See Kit 1040-972-2322								6	8
C	X1	H		PLATE, RETAINER 803843 RETAINER PLATE (33525)		ea	1	See Kit 1040-972-2322								6	9
C	X1	H		DISK, COMPRESSION 803843 DISK (33525)		ea	2	See Kit 1040-972-2322								6	10
C	P	H	1040-963-0558	PLATE, VALVE 272947 (33525)		ea	1		*	*	*	*	*	*		6	11
C	X1	H		GASKET, PLATE 803843 PLATE GASKET (33525)		ea	1	See Kit 1040-972-2222								6	12
C	X1	H		PLATE, COMPRESSION 803843 COMPRESSION PLATE (38525)		ea	2	See Kit 1040-972-2322								6	13
C	P	F	9505-293-8208	WIRE, STEEL, CORROSION RESISTING .032 dia MS20995C82 (96906)		ft	3	* * *	*	*	*	*	*	*		6	14
C	P	H	5306-226-9087	BOLT, MACHINE stl, 5/16-24 x .750 lg MS90726-82 (96906)		ea	4		*	*	*	*	*	*		6	15
C	P	H	5310-167-0662	WASHER, LOCK stl, .323 od, .205 dia hole, 0.046 thk MS35337-43 (96906)		ea	4		*	*	*	*	*	*		6	16
C	X1	H		PLATE 242665-17 (33525)		ea	1		*	*	*	*	*	*		6	17
C	P	H	5330-835-8974	PACKING, PREFORMED syn rubber 0.924 id, 1.130 od MS29561-119 (96906)		ea	1		*	*	*	*	*	*		6	18
C	P	H	1040-972-2322	REPAIR KIT, CYLINDER, THIRD STAGE 803843 (33525)		ea	1		*	*	*	*	*	*		6	
				1-PACKING, PREFORMED												6	1
				1-SHIM												6	2
				1-RING, RETAINING												6	6
				1-GASKET, HEAD												6	8
				1-PLATE, RETAINER												6	9
				2-DISK, COMPRESSION												6	10
				1-GASKET, PLATE												6	12
				1-PLATE, COMPRESSION												6	13
C	P	H	5305-273-5001	SCREW, CAP, SOCKET HEAD stl, 1/4-20 x .875 lg MS24677-36 (96906)		ea	4		*	*	*	*	*	*		7	1
C	P	H	5310-582-5965	WASHER, LOCK		ea	18		*	*	*	*	*	*		7	2

Action	(1)		(2)	(3)		(4)	(5)	(6)			(7)			(8)	(9)	(10)	
	SMR Code		Federal Stock No.	Description		Unit of Meas	Qty Inc in Unit	30-Day DS Maint Allowance			30-Day GS Maint Allowance			1-Yr alw per 100 equip cntgcy	Depot maint alw per 100 equip	Illustration	
				<i>Reference Number &amp; Mfg Code</i>	<i>Usable on Code</i>			(a)	(b)	(c)	(a)	(b)	(c)			(a)	(b)
							1-20	21-50	51-100	1-20	21-50	51-100			Fig. No.	Item No.	
C	P	H	1040-976-8981	stl, split ring, 0.263 in. dia hole, 0.489 od, .072 thk MS35338-44 (96906)		ea				*	*	*	*	*	7	3	
C	X1	H		HEAD ASSEMBLY 842294 (33525)		1									7	4	
C	X1	H		PACKING, PREFORMED 808844 O RING (33525)		1	See Kit 1040-972-0024								7	5	
C	X1	H		WASHER, COMPRESSION 803844 COMPRESSION WASHER (33625)		1	See Kit 1040-972-0024								7	6	
C	X1	H		WASHER, KEYED 803844 KEYED WASHER (33525)		1	See Kit 1040-972-024								7	7	
C	X1	H		WASHER, STARRED 803844 STARRED WASHER (33525)		1	See Kit 1040-972-0024								7	8	
C	P	H	1040-972-2321	PLATE, VALVE, SECOND STAGE 272265 (33525)		ea				*	*	*	*	*	7	9	
C	X1	H		PLATE, COMPRESSION 803844 COMPRESSION PLATE ONE NOTCH (33525)		2	See Kit 1040-972-0024								7	10	
C	X1	H		PLATE, COMPRESSION 803844 COMPRESSION PLATE TWO NOTCH (38525)		1	See Kit 1040-972-0024								7	11	
C	P	H	1040-081-5129	WASHER, THRUST cres, 1.620 od, 1.521 id, 0.086 in. thk 218170 (33525)		ea				*	*	*	*	*	7	12	
C	X2	H		WASHER, FLAT 213397 (33525)		ea									7	13	
C	X1	H		PLATE, COMPRESSION 808844 COMPRESSION PLATE (33525)		1	See Kit 1040-972-0024								7	14	
C	P	H	1040-974-5740	PLUNGER ASSEMBLY, SECOND STAGE 878732 (33525)		ea				*	*	*	*	*	7	4	
C	P	H	1040-972-0024	REPAIR KIT, SECOND STAGE 803844 (33625)		ea				*	*	*	*	*	7	5	
				1-PACKING, PREFORMED											7	6	
				1-WASHER, COMPRESSION											7	7	
				1-WASHER, KEYED											7	8	
				1-WASHER, STARRED											7	9	
				2-PLATE, COMPRESSION											7	10	
				1-PLATE, COMPRESSION											7	11	
				1-PLATE, COMPRESSION											7	12	
C	X1	H		WASHER, KEYED 842292 KEYED WASHER ROLE (33326)		1	See Kit 1040-972-0026								8	1	
C	P	H	1040-084-2926	SPACER 213172 (33525)		ea				*	*	*	*	*	8	2	

Action	(1)		(2)	(3)		(4)	(5)	(6)			(7)			(8)	(9)	(10)	
	SMR Code		Federal Stock No.	Description		Unit of Meas	Qty Inc in Unit	30-Day DS Maint Allowance			30-Day GS Maint Allowance			1-Yr alw per 100 equip cntgcy	Depot maint alw per 100 equip	Illustration	
				Reference Number & Mfg Code	Usable on Code			(a) 1-20	(b) 21-50	(c) 51-100	(a) 1-20	(b) 21-50	(c) 51-100			(a) Fig. No.	(b) Item No.
C	X1	H		WASHER, KEYED 842292 KEYED WASHER, NOTCH (33525)		ea	1	See Kit 1040-972	0025							8	3
C	X1	H		SHIM 842292 LARGE SHIM (33525)			1	See Kit 1040-972	0025							8	4
C	P	H	5306-087-2996	SCREW, CAP, SOCKET HEAD SU, 10-24, 0.875 lg MS24677-26 (96906)		ea	6			*	*	*	*	*	*	8	5
C	P	H	6310-582-5965	WASHER, LOCK stl, split ring, 0.268 in. dia hole MS883854 (96906)		ea	6			*	*	*	*	*	*	8	6
C	P	H	5310-721-4434	NUT, PLAIN HEXAGON cres, 1/4-28 AN320C4 (88044)		ea	1			*	*	*	*	*	*	8	7
C	P	H	5310-531-9515	WASHER, FLAT cres, 0.270 hole size AN960C416 (88044)		ea	1			*	*	*	*	*	*	8	8
C	P	H	1040-971-4922	HEAD, FIRST STAGE 873566 (33525)		ea	1			*	*	*	*	*	*	8	9
C	P	0	1040-977-9473	PROTECTION CAP, FIRST 246308 (33525)		ea	1			*	*	*	*	*	*	8	10
C	P	0	5305-087-2995	SCREW, CAP, SOCKET HEAD stl, 10-24, 1.600 lg MS24677-29 (96906)		ea	4			*	*	*	*	*	*	8	11
C	P	0	5310-285-7036	WASHER, LOCK No. 10 screw size MS1220565(96906)		ea	4			*	*	*	*	*	*	8	12
C	P	0	1040-971-4928	CAP, FIRST HEAD 272198 (33525)		ea	1			*	*	*	*	*	*	8	13
C	P	0	5335-081-6837	PACKING, PREFORMED 213213 (33525)		ea	1			*	*	*	*	*	*	8	14
C	P	0	4310-084-2928	FILTER ASSEMBLY, FIRST STAGE 842231 (33625)		ea	1			*	*	*	*	*	*	8	15
C	P	H	5305-081-8511	SCREW, CAP, SOCKET HEAD stl, 1/4-28 x .837 lg 213212 (33525)		ea	1			*	*	*	*	*	*	8	16
C	X1	H		WASHER, FLAT 842292 FLAT WASHER (33525)			1	See Kit 1040-977	0025							8	17
C	P	H	4310-972-7671	PLATE, VALVE 272204 (33525)		ea	1			*	*	*	*	*	*	8	18

Action	(1)		(2)	(3)		(4)	(5)	(6)			(7)			(8)	(9)	(10)	
	SMR Code	Federal Stock No.	Description	Reference Number & Mfg Code	Usable on Code	Unit of Meas	Qty Inc in Unit	30-Day DS Maint Allowance			30-Day GS Maint Allowance			1-Yr alw per 100 equip cntgcy	Depot maint alw per 100 equip	Illustration	
								(a) 1-20	(b) 21-50	(c) 51-100	(a) 1-20	(b) 21-50	(c) 51-100			(a) Fig. No.	(b) Item No.
C	P	H	1040-084-2929	SEAT, DISCHARGE, FIRST STAGE 245522 (33525)		ea	1				*	*	*	*	*	8	19
C	X1	H		WASHER, KEYED 842292 KEYED WASHER (33525)			2	See Kit 1040-972-0025								8	20
C	X1	H		PACKING, PREFORMED 842292 LARGE O RING (33525)			1	See Kit 1040-972-0025								8	21
C	X1	H		PIN, COTTER 842292 COTTER PIN (33525)			1	See Kit 1040-972-0025								8	22
C	P	H	5365 289 4932	PLUG, MACHINE THREAD aluminum, 7/814, 6 holes drilled for lock-wire AN814-10DL (88044)		ea	1				*	*	*	*	*	8	23
C	X1	H		PACKING, PREFORMED 842292 SMALL O RING (33525)			1	See Kit 1040-972-0025								8	24
C	X1	H		RING, RETAINING 842292 RETAINING RING (33525)			1	See Kit 1040-972-0025								8	25
C	X1	H		RETAINER 842292 RETAINER (33525)			1	See Kit 1040-972-0025								8	26
C	X1	H		SHIM 842292 SHIM (33525)			8	See Kit 1040-972-0025								8	27
C	P	H	4310-970-8430	PIN ASSEMBLY, PISTON 841727 (33525)		ea	1				*	*	*	*	*	8	28
C	P	H	1040-972-0023	PISTON, COMPRESSOR 290625 (33525)		ea	1				*	*	*	*	*	8	29
C	X1	H		RING, RETAINING 842292 RETAINING RING (33525)			1	See Kit 1040-972-0025								8	30
C	X1	H		RING, PISTON 842292 RISTON RING (33525)			2	See Kit 1040-972-0025								8	31
C	P	H	1040-972-0025	REPAIR KIT, FIRST STAGE 842292 (33525)		ea	1				*	*	*	*	*	8	
				1-WASHER, KEYED												8	1
				1-WASHER, KEYED												8	3
				1-SHIM												8	4
				1-WASHER, FLAT												8	17
				2-WASHER, KEYED												8	20
				1-PACKING, PREFORMED												8	21
				1-PIN, COTTER												8	22
				1-PACKING, PREFORMED												8	24
				1-RING, RETAINING												8	25
				1-RETAINER												8	26
				3-SHIM												8	27
				1-RING, RETAINING												8	30
				2-RING, PISTON												8	31

Action	(1)		(2)	(3)		(4)	(5)	(6)			(7)			(8)	(9)	(10)	
	SMR Code	Federal Stock No.	Description	Reference Number & Mfg Code	Usable on Code	Unit of Meas	Qty Inc in Unit	30-Day DS Maint Allowance			30-Day GS Maint Allowance			1-Yr alw per 100 equip cntgcy	Depot maint alw per 100 equip	Illustration	
								(a) 1-20	(b) 21-50	(c) 51-100	(a) 1-20	(b) 21-50	(c) 51-100			(a) Fig. No.	(b) Item No.
C	X1	H		SCREW, CAP, HEXAGON HEAD stl, 1/4-20 x 0.750 lg MS90725-6 (96906)		ea	4									9	1
C	P	H	5310-582-5965	WASHER, LOCK stl, split ring, 0.263 dia hole MS35338-44 (96906)		ea	4				*	*	*	*	*	9	2
C	P	H	1040-974-7851	ADAPTER ASSEMBLY 873808 (33525)		ea	1				*	*	*	*	*	9	3
C	P	H	4730-240-6905	ADAPTER, STRAIGHT, PIPE TO TUBE aluminum, 1/8 NPT to 1/4 tube size AN816-4D (88044)		ea	2				*	*	*	*	*	9	4
C	X1	H		PACKING, PREFORMED 803845 LARGE O RING (33625)			1	See Kit 1040-972-0026								9	5
C	X1	H		WASHER, WAVED 803845 WAVED WASHER (33525)			1	See Kit 1040-972-0026								9	6
C	X1	H		SEAL 803845 LARGE SEAL (33525)			1	See Kit 1040-972-0026								9	7
C	P	H	3110-971-1365	BEARING, REAR 245734 (33525)		ea	1				*	*	*	*	*	9	8
C	P	H	2990-970-0003	CRANKSHAFT ASSEMBLY 842303 (33525)		ea	1				*	*	*	*	*	9	9
C	P	H	1040-062-8574	KEYSTONE ASSEMBLY 842311 (33525)		ea	1				*	*	*	*	*	9	10
C	X1	H		PIN, ROLL 803845 ROLL PIN (33525)			1	See Kit 1040-972-0026								9	11
C	P	H	3110-971-1364	BEARING, FRONT 245733 (33525)		ea	1				*	*	*	*	*	9	12
C	P	H	1040-970-6222	PLATE, BACKUP 842255 (33525)		ea	1				*	*	*	*		9	13
C	P	H	1040-062-8575	GEROTOR AND ECCENTRIC RING GS5298-1-2-3 (33525)		ea	1				*	*	*	*	*	9	14
C	P	D	1040-972-0022	CRANKCASE 892134 (33525)		ea	1				*	*	*	*	*	9	15
C	P	H	5365-508-1064	PLUG, MACHINE THREAD aluminum, hex hd, 0.438-20 212800 (33525)		ea	1				*	*	*	*	*	9	16
C	X1	H		PACKING, PREFORMED 803845 SMALL O RING (33525)			2	See Kit 1040-972-0026								9	17
C	P	H	5340-087-3509	DISK, SOLID, PLAIN cres, 0.230 od x 0.015 thk		ea	6				*	*	*	*	*	9	18

Action	(1)		(2)	(3)		(4)	(5)	(6)			(7)			(8)	(9)	(10)	
	SMR Code		Federal Stock No.	Description		Unit of Meas	Qty Inc in Unit	30-Day DS Maint Allowance			30-Day GS Maint Allowance			1-Yr alw per 100 equip cntgcy	Depot maint alw per 100 equip	Illustration	
				<i>Reference Number &amp; Mfg Code</i>	<i>Usable on Code</i>			(a) 1-20	(b) 21-50	(c) 51-100	(a) 1-20	(b) 21-50	(c) 51-100			(a) Fig. No.	(b) Item No.
C	X1	H		212853 (33625) SPRING, PUMP		1	See Kit 1040-972-0026								9	19	
C	P	H	1650-328-3725	803845 SPRING (33525) GUIDE, AIR COMPRESSOR GUN	ea	1				*	*	*	*	*	9	20	
C	P	H	3110-100-4162	206844 (33525) BALL, BEARING	ea	1				*	*	*	*	*	9	21	
C	P	H	4310-972-2315	Stl, 0.1562 dia MS19065-46 (96906) SEAT, VALVE	ea	1				*	*	*	*	*	9	22	
C	P	H	5365-087-8735	stl body 212799 (33525) PLUG, MACHINE THREAD	ea	1				*	*	*	*	*	9	23	
C	P	H	5340-087-4572	aluminum, 0.420 245726 (33525) SPRING, STRAINER	ea	1				*	*	*	*	*	9	24	
C	P	H	4730-969-6632	218274 (33525) STRAINER, ELEMENT SEDIMENT	ea	1				*	*	*	*	*	9	25	
C	P	H	4730-240-5905	brass, 100 mesh 842258 (33525) ADAPTER, STRAIGHT, PIPE TO TUBE	ea	1				*	*	*	*	*	9	26	
C	P	H	4730-698-4030	aluminum, 1/8 NPT to 1/4 tube size AN816-D (88044) CAP, TUBE	ea	1				*	*	*	*	*	9	27	
C	X1	H		res, used with 1/4 od tube AN929-4S (81352) PACKING, PREFORMED		1	See Kit 1040-972-0026								9	28	
C	X1	H		803845 MEDIUM O RING (33525) SEAL		1	See Kit 1040-972-0026								9	29	
C	P	H	5365-801-2500	803845 SMALL SEAL (33525) RING, RETAINING	ea	1				*	*	*	*	*	9	30	
C	X2	H		stl, 1.249 in. dia, 0.250 thk MS16625-1112 (96906) SCREW, CAP, SOCKET HEAD	ea	3									9	31	
C	P	H	5310-686-3744	832, 0.875 in. lg 5306-0814 (33525) WASHER, FLAT	ea	3				*	*	*	*	*	9	32	
C	X1	H		res, 0.184 dia hole AN960-C8 (88044) RING, RETAINING		1	See Kit 1040-972-0026								9	33	
C	P	H	1040-972-2316	803845 RETAINING RING (33525) TUBE ASSEMBLY, OIL SUPPLY	ea	1	*	*	*	*	*	*	*	*	9	34	
C	P	F	5330-953-0559	803955 (33525) PACKING, PREFORMED	ea	1	*	*	*	*	*	*	*	*	9	35	
				rubber, 1.048 in dia, 0.112 in. thk 213840 (33525)													

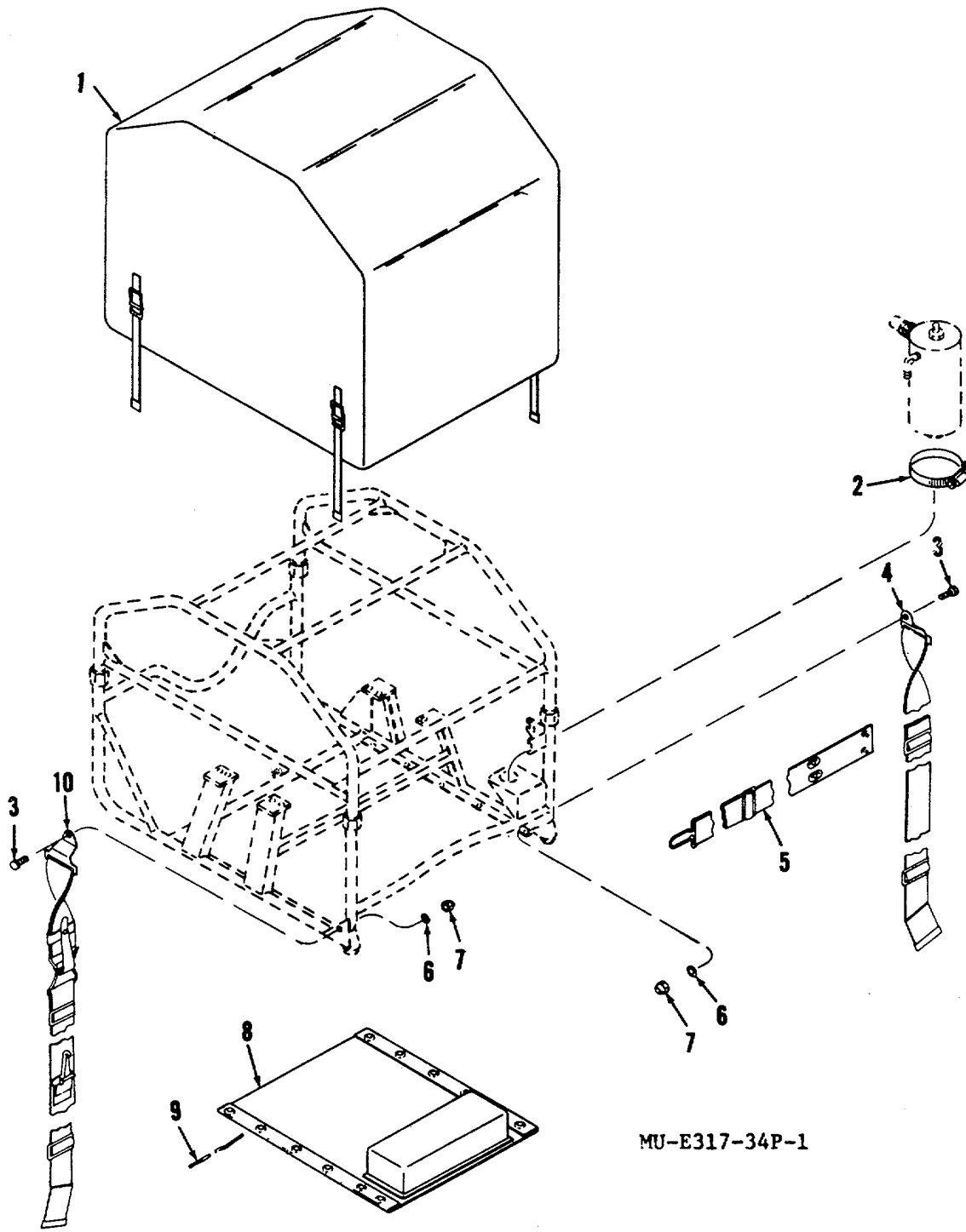
Action	(1) SMR Code		(2) Federal Stock No.	(3) Description  <i>Reference Number &amp; Mfg Code</i> <i>Usable on Code</i>		(4) Unit of Meas	(5) Qty Inc in Unit	(6) 30-Day DS Maint Allowance			(7) 30-Day GS Maint Allowance			(8) 1-Yr alw per 100 equip cntgcy	(9) Depot maint alw per 100 equip	(10) Illustration	
								(a)	(b)	(c)	(a)	(b)	(c)			(a)	(b)
								1-20	21-50	51-100	1-20	21-50	51-100			Fig. No.	Item No.
C	P	F	5365-950-2654	PLUG, MACHINE aluminum, 1 1/4-18, 1 1/2 in. across flats 245298 (33525)		ea	1	*	*	*	*	*	*	*	*	9	36
C	P	F	5310-087-0255	WASHER, SPRING TENSION copper, 0.990 in. dia hole 245362 (33525)		ea	1	*	*	*	*	*	*	*	*	9	37
C	P	F	5305-207-8998	SCREW, TAPPING, THREAD CUTTING MS24S29-11 (96906)		ea	2	*	*	*	*	*	*	*	*	9	38
C	P	O	5330-584-0150	PACKING, PREFORMED 5304-0500 (33525)		ea	1	*	*	*	*	*	*	*	*	9	39
C	P	O	6680-970-0004	GAGE, ROD-CAP, LIQUID LEVEL 842172 (33525)		ea	1	*	*	*	*	*	*	*	*	9	40
C	P	H	1040-972-0026	REPAIR KIT, CRANKCASE 803845 (33525) 1-PACKING, PREFORMED 1-WASHER, WAVED 1-SEAL 1-PIN, ROLL 2-PACKING, PREFORMED SPRING, PUMP 1-PACKING, PREFORMED 1-SEAL 1-RING, RETAINING		ea	1				*	*	*	*	*	9	5
					GROUP 600-ENGINE											9	6
																9	7
																9	11
																9	17
																9	19
																9	28
																9	29
																9	33
C	P	H	S	2805-714-8552	ENGINE, GASOLINE 1 1/2 HP, 4 cycle, 1 cylinder, air cooled 1A08-2 (97403)	ea	1				*	*	*	*	*	10	1
C	P	H		2990-971-1366	PULLEY, ENGINE STARTER ROPE D68-13-1532 (81861)	ea	1				*	*	*	*	*	10	2
C	P	H		5806 064-8407	BOLT, SELF-LOCKING 1/4-20 x 3/4 lg 1611208PC17 (10001)	ea	12				*	*	*	*	*	10	3
C	P	H		1040-971-4921	BRACKET, ANGLE B68-18-1541 (81361)	ea	2				*	*	*	*	*	10	4
C	P	H		5340-971-4920	BRACKET, ANGLE B68-13-1540 (81361)	ea	2				*	*	*	*	*	10	5
C	P	F		4730-186-7797	NIPPLE, PIPE brass, 1/8-27 NPT AN911-1 (88044)	ea	1	*	*	*	*	*	*	*	*	10	6
C	P	F		4730-231-5605	ELBOW, PIPE	ea	1	*	*	*	*	*	*	*	*	10	7



Action	(1)		(2)	(3)		(4)	(5)	(6)			(7)			(8)	(9)	(10)	
	SMR Code	Federal Stock No.	Description	Reference Number & Mfg Code	Usable on Code	Unit of Meas	Qty Inc in Unit	30-Day DS Maint Allowance			30-Day GS Maint Allowance			1-Yr alw per 100 equip cntgcy	Depot maint alw per 100 equip	Illustration	
								(a)	(b)	(c)	(a)	(b)	(c)			(a)	(b)
C	P	F	4820-254-8640	brass or bronze, 1/8 NPT-female x 1/8 NPT-male AN9141 (88044)		ea	1	*	*	*	*	*	*	*	*	10	8
C	P	H	5305-088-5881	SCREW, SELF-LOCKING 5/16-24 x 3/4 in. g 213299 (33525)		ea	1				*	*	*	*	*	10	9
C	P	H	1040-971-4919	ADAPTER, CRANKSHAFT 272217 (33525)		ea	1				*	*	*	*	*	10	10
C	P	F	5305-993-1848	SCREW, MACHINE stl, pltd, 10/32 x 3/4 lg MS35207-265 (96906)		ea	1	*	*	*	*	*	*	*	*	10	11
C	P	F	5340-057-2900	CLAMP, LOOP 755S4-2-8 (83930)		ea	1	*	*	*	*	*	*	*	*	10	12
C	P	F	5330-248-3844	PACKING, PREFORMED MS29513-113 (96906)		ea	1	*	*	*	*	*	*	*	*	10	13
C	P	F	1040-084-0436	CONNECTOR AND FILTER, FUEL TANK B68-13-1566 (81361)		ea	1	*	*	*	*	*	*	*	*	10	14
C	P	F	4720-062-4332	TUBE ASSEMBLY, METAL 803831 (33525)		ea	1	*	*	*	*	*	*	*	*	10	15
C	P	F	5310-576-5752	WASHER, LOCK No. 10 screw size MS35333-39 (96906)		ea	1	*	*	*	*	*	*	*	*	10	16
C	P	F	5310-934-9751	NUT, PLAIN, HEXAGON stl, pltd, 10-32 MS35650-302 (96906)		ea	1	*	*	*	*	*	*	*	*	10	17
C	P	F	5365-289-3070	PLUG, MACHINE THREAD 3/4-16 NF MS9015-08 (96906)		ea	1	*	*	*	*	*	*	*	*	10	18
C	P	F	5330-263-8031	PACKING, PREFORMED MS29512-08 (96906)		ea	1	*	*	*	*	*	*	*	*	10	19
C	P	F	5310-209-0786	WASHER, LOCK 1/4 bolt size MS35335-33 (96906)		ea	10	*	*	*	*	*	*	*	*	10	20
C	P	F	5305-068-0500	SCREW, CAP, HEXAGON HEAD Stl, pltd, 1/4-80 x 0.500 in lg MS90725-3 (96906)		ea	8	*	*	*	*	*	*	*	*	10	21
C	P	H	5305-984-6212	SCREW, MACHINE stl, pltd, 10-24 x 3/4 lg MS35206-265 (96906)		ea	2				*	*	*	*	*	10	22
C	P	H	2990-972-2318	PIPE, EXHAUST C68-13-1572 (81361)		ea	1				*	*	*	*	*	10	23

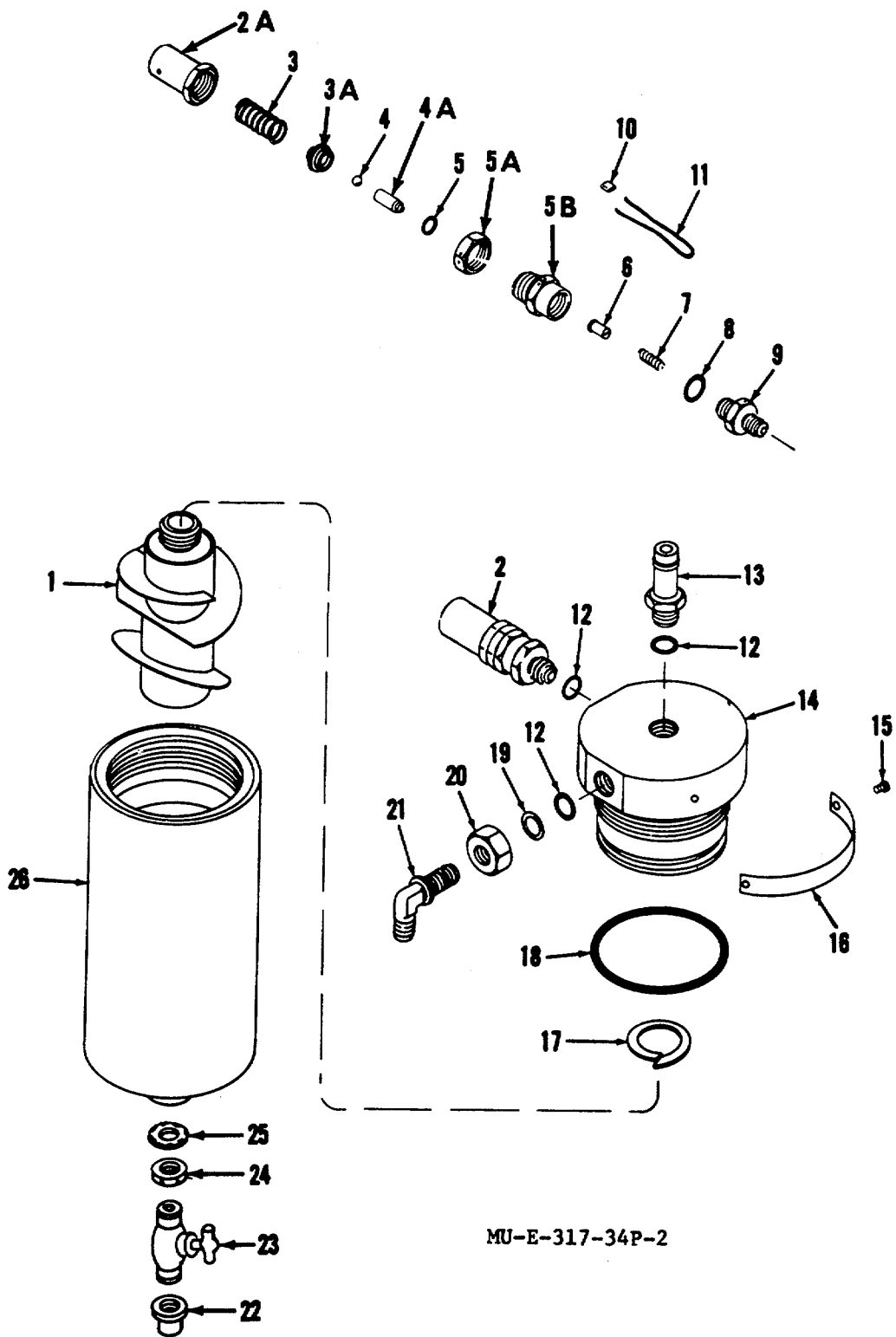
Action	(1)		(2)	(3)		(4)	(5)	(6)			(7)			(8)	(9)	(10)	
	SMR Code	Federal Stock No.	Description	Reference Number & Mfg Code	Usable on Code	Unit of Meas	Qty Inc in Unit	30-Day DS Maint Allowance			30-Day GS Maint Allowance			1-Yr alw per 100 equip cntgcy	Depot maint alw per 100 equip	Illustration	
								(a) 1-20	(b) 21-50	(c) 51-100	(a) 1-20	(b) 21-50	(c) 51-100			(a) Fig. No.	(b) Item No.
C	P	H	5310-543-5933	WASHER, LOCK No. 10 screw size MS35333-73 (96906)		ea	2				*	*	*	*	*	10	24
C	P	H	5310-934-9760	NUT, PLAIN, HEXAGON No. 10-24 MS35649-204 (96906)		ea	2				*	*	*	*	*	10	25
C	P	F	1040-972-5144	FRAME, UPPER E81-8-1548 (81361)	GROUP 700-FRAME AND FUEL TANK	ea	1	*	*	*	*	*	*	*	*	11	1
C	P	H	1040-972-5143	FRAME, LOWER E81-8-1548 (81361)		ea	1				*	*	*	*	*	11	2
C	P	F	5340-977-7247	BUMPER, RUBBER A68-13-1523 (81361)		ea	4	*	*	*	*	*	*	*	*	11	3
C	P	F	5305-993-2459	SCREW, MACHINE stl, pltd, 1/4-28 x 1 in lg MS35207-283 (96906)		ea	4	*	*	*	*	*	*	*	*	11	4
C	P	F	5305-068-0500	SCREW, CAP, HEXAGON HEAD stl, pltd, 1/4-20 x 0.500 in. lg MS90725-3 (96906)		ea	8	*	*	*	*	*	*	*	*	11	5
C	P	F	5310-209-0786	WASHER, LOCK stl, pltd, 0.267 dia hole MS35335-33 (96906)		ea	2	*	*	*	*	*	*	*	*	11	6
C	P	F	5305-253-5609	SCREW, DRIVE stl, no. 2, 0.125 lg MS21318-13 (96906)		ea	4	*	*	*	*	*	*	*	*	11	7
C	P	F	1040-081-8079	PLATE, IDENTIFICATION 245775 (33525)		ea	1	*	*	*	*	*	*	*	*	11	8
C	P	F	1040-994-7985	TANK, FUEL, ENGINE E68-13-1561 (81361)		ea	1	*	*	*	*	*	*	*	*	11	9
C	X2	F		HOOK, CHAIN, S A81-1-882 (81361)		ea	1	*	*	*	*	*	*	*	*	11	10
C	P	F	4010-958-0633	CHAIN, WELDLESS stl, 23 links per ft PRC 271 (81348)		ft	1	*	*	*	*	*	*	*	*	11	11
C	P	F	4030-063-3979	HOOK, CHAINS B81-1-526 (81361)		ea	1	*	*	*	*	*	*	*	*	11	12
C	P	0	5330-265-1075	PACKING, PREFORMED syn rubber, 0.143 in. thk, 1.240 in. id MS29513-218 (96906)		ea	1	*	*	*	*	*	*	*	*	11	13

Action	(1)		(2)	(3)		(4)	(5)	(6)			(7)			(8)	(9)	(10)	
	SMR Code		Federal Stock No.	Description		Unit of Meas	Qty Inc in Unit	30-Day DS Maint Allowance			30-Day GS Maint Allowance			1-Yr alw per 100 equip cntgcy	Depot maint alw per 100 equip	Illustration	
				<i>Reference Number &amp; Mfg Code</i>	<i>Usable on Code</i>			(a)	(b)	(c)	(a)	(b)	(c)			(a)	(b)
							1-20	21-50	51-100	1-20	21-50	51-100			Fig. No.	Item No.	
C	P	0	1040-976-8980	CAP ASSEMBLY B68-13-1560 (81861)		ea	1	*	*	*	*	*	*	*	11	14	
C	P	F	5310-141-1795	WASHER, FLAT Stl, 1/4 screw size AN960-416 (88044)		ea	4	*	*	*	*	*	*	*	11	15	
C	P	F	5310-982-4988	NUT, SELF-LOCKING HEXAGON cres, 1/4-28 MS21045C4 (96906)		ea	4	*	*	*	*	*	*	*	11	16	



MU-E317-34P-1

Figure 1. Canvas.



MU-E-317-34P-2

Figure 2. Water separator.

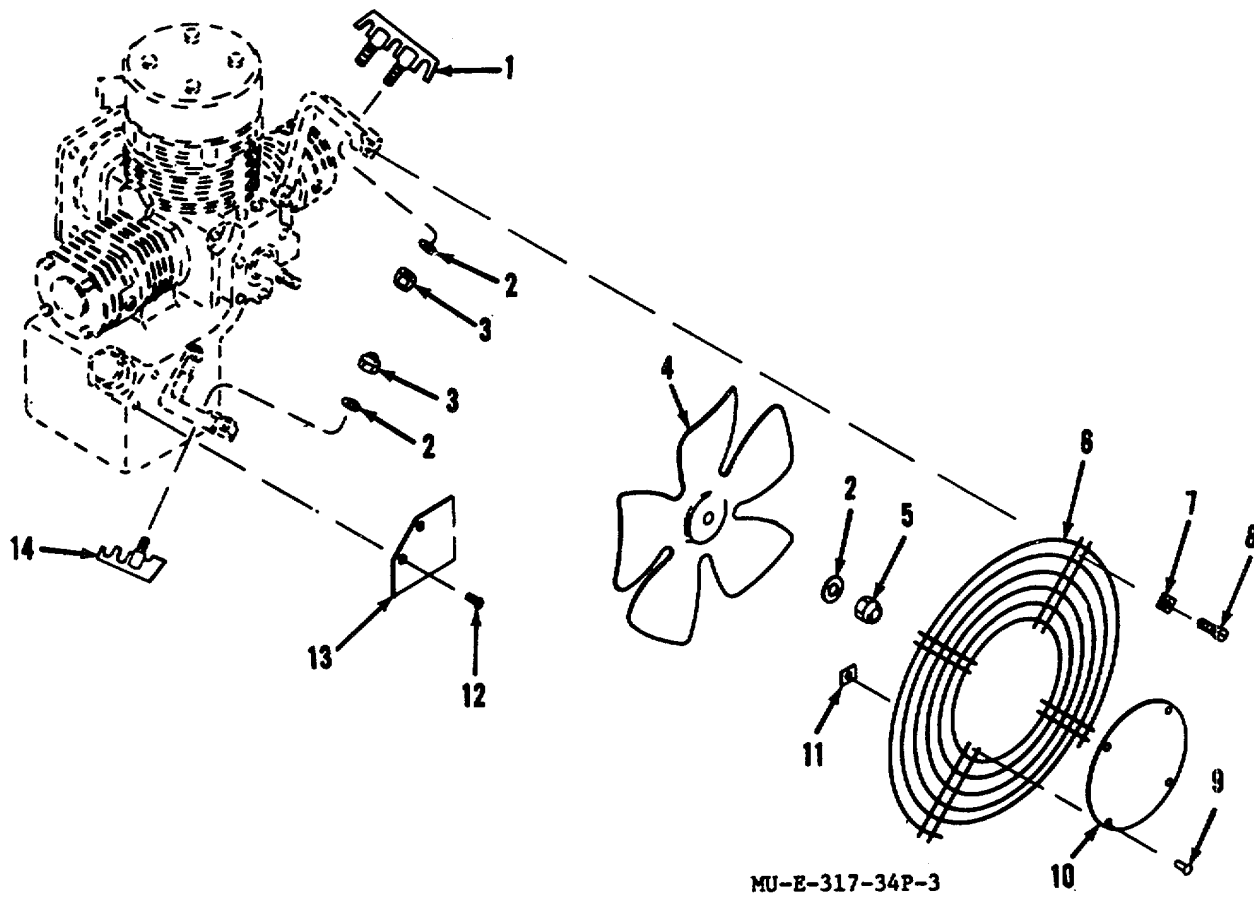


Figure 3. Fan and fanguard.

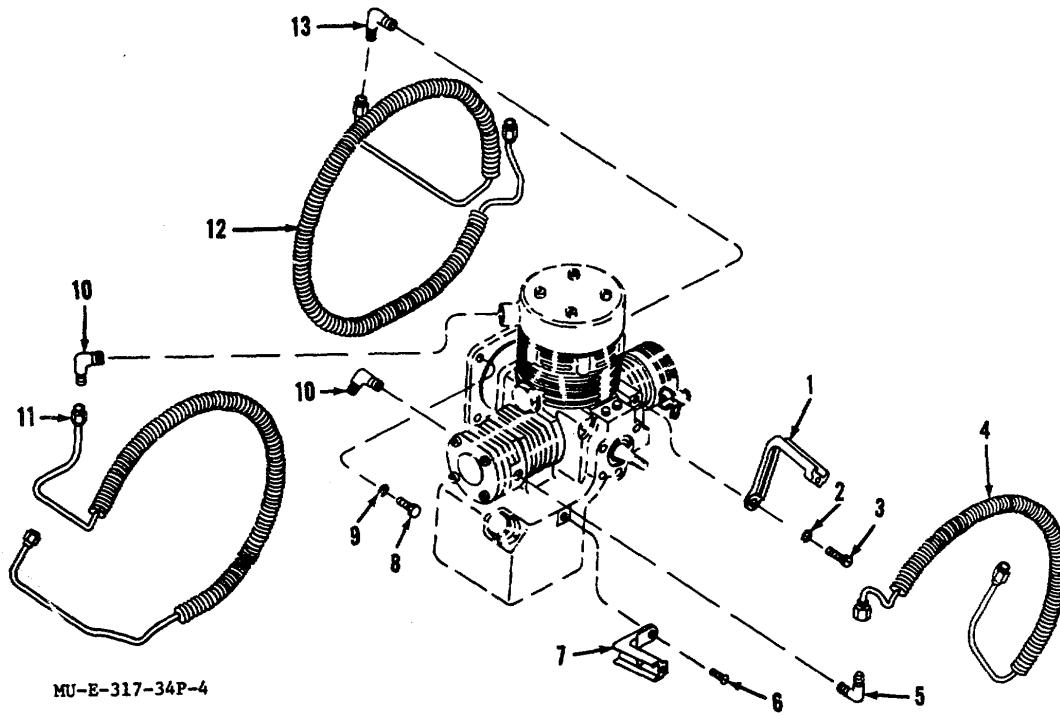


Figure 4. Intercooler and aftercooler.

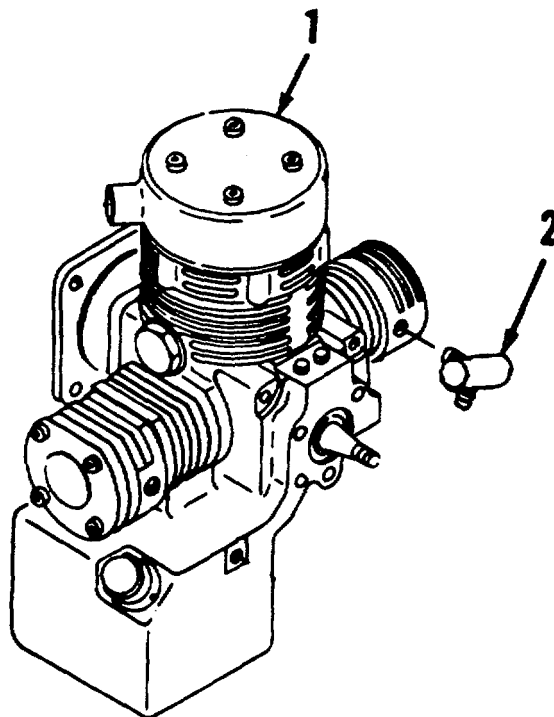


Figure 5. Compressor and safety relief valve.

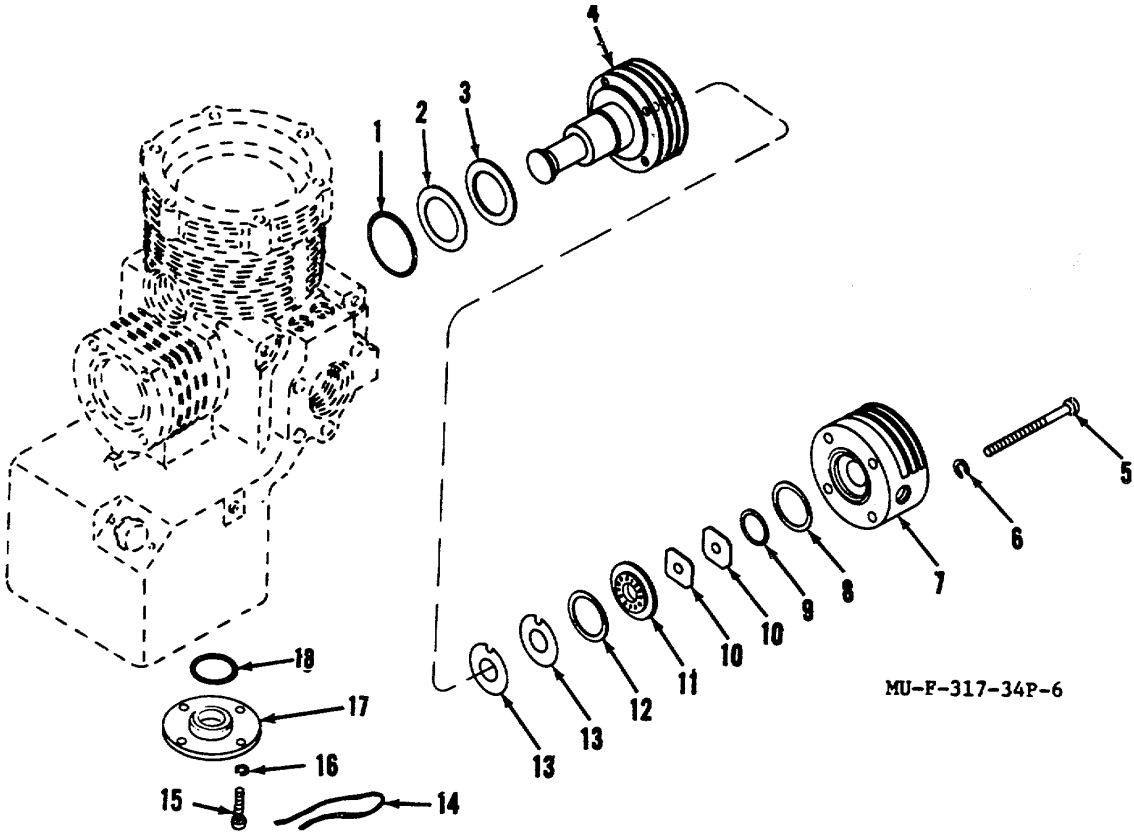
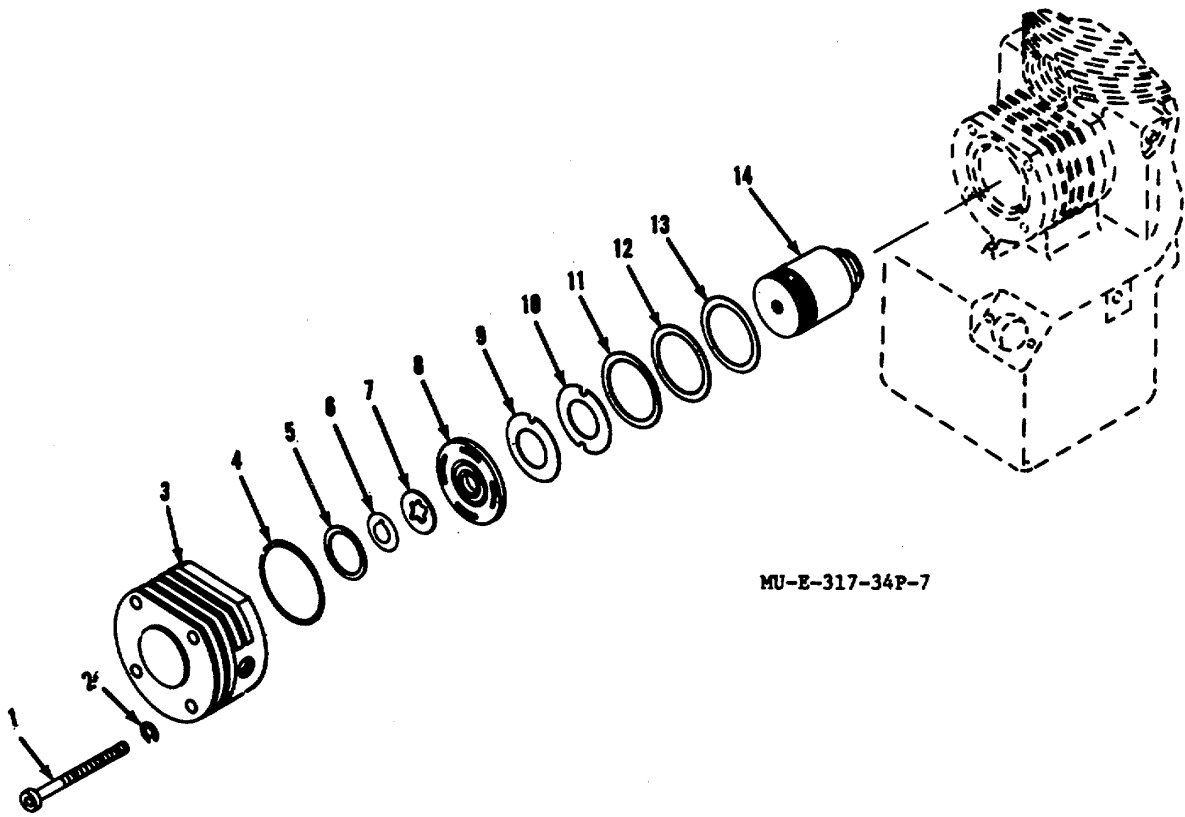


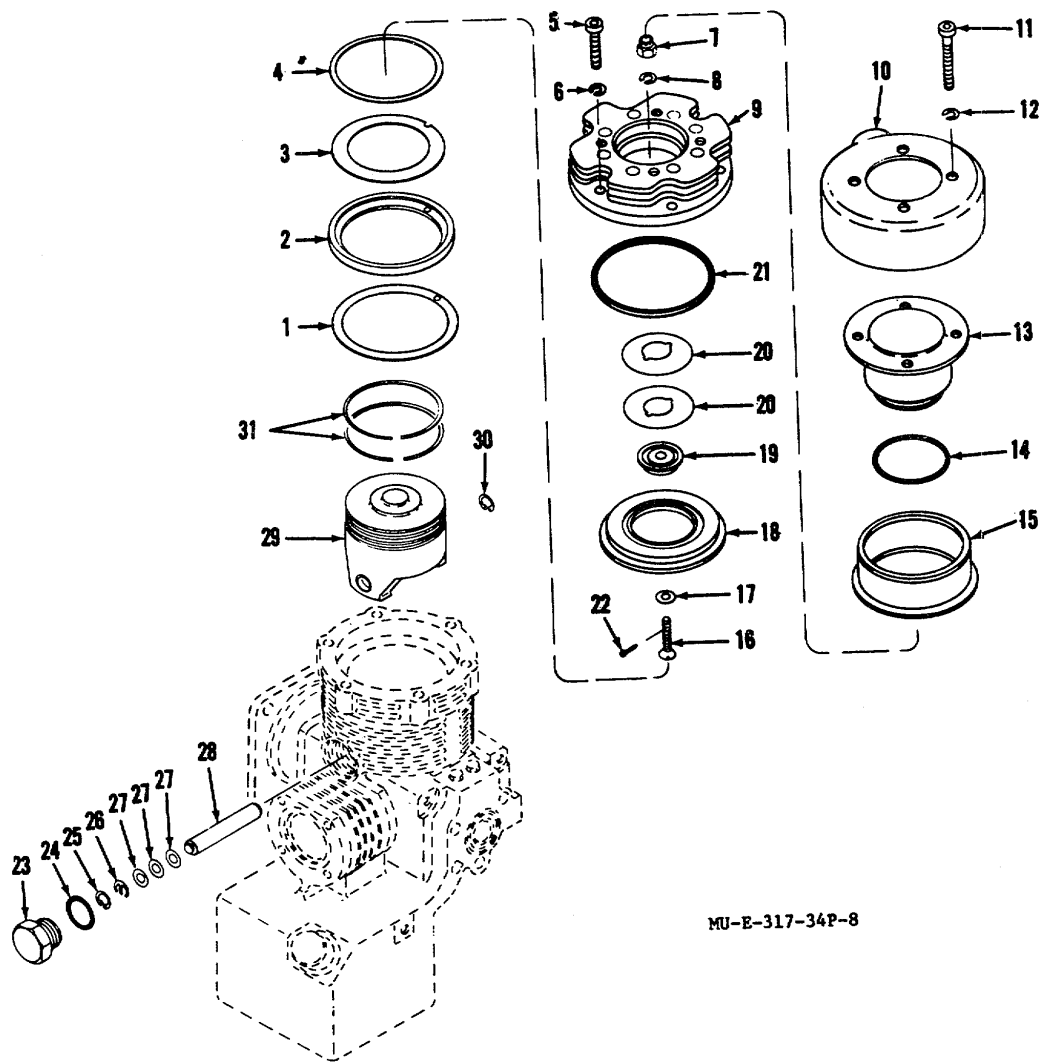
Figure 6. Third stage cylinder.





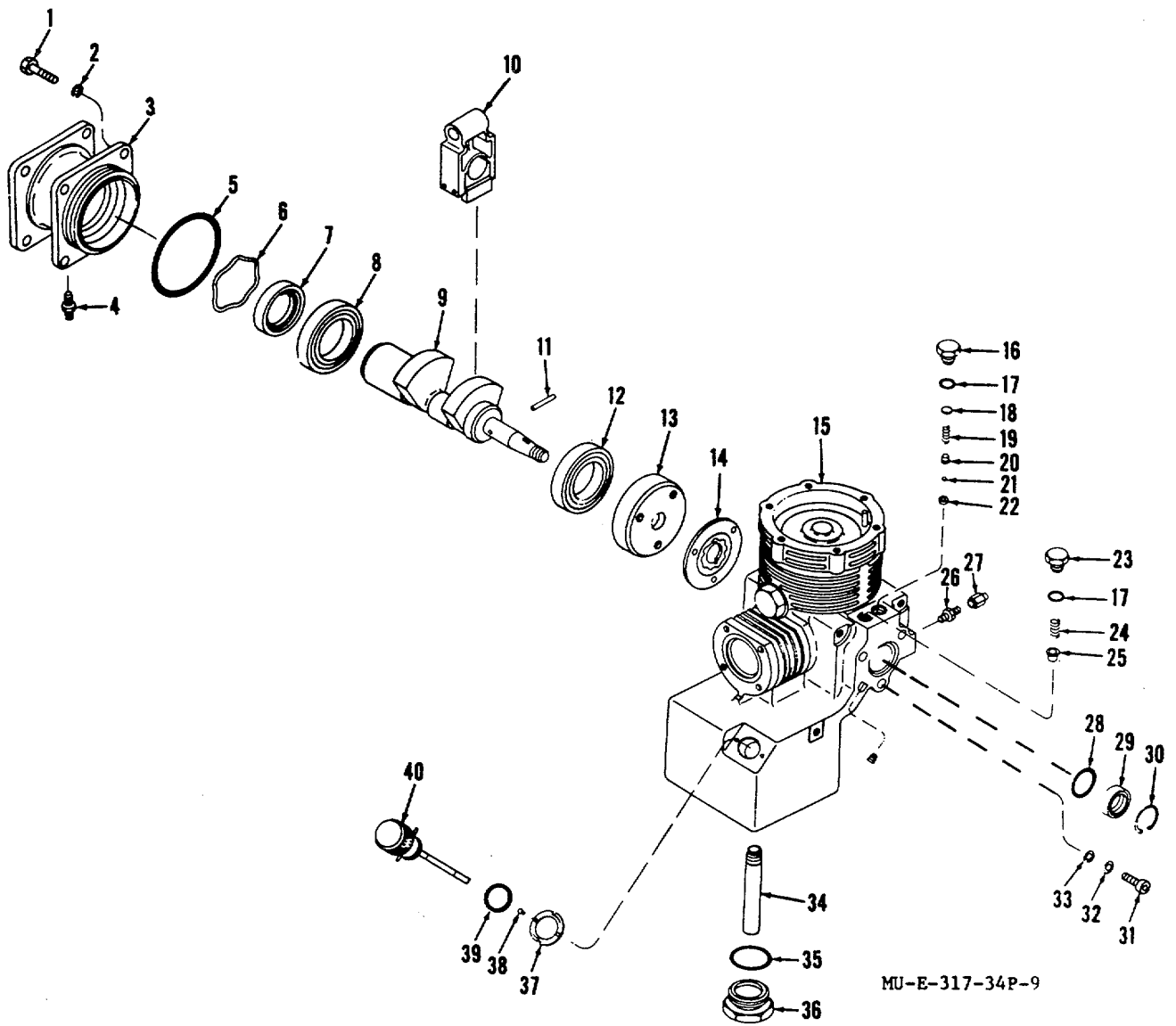
MU-E-317-34P-7

Figure 7. Second stage cylinder.



MU-E-317-34P-8

Figure 8. First stage piston, filter, and valve.



MU-E-317-34P-9

Figure 9. Crankshaft and crankcase.

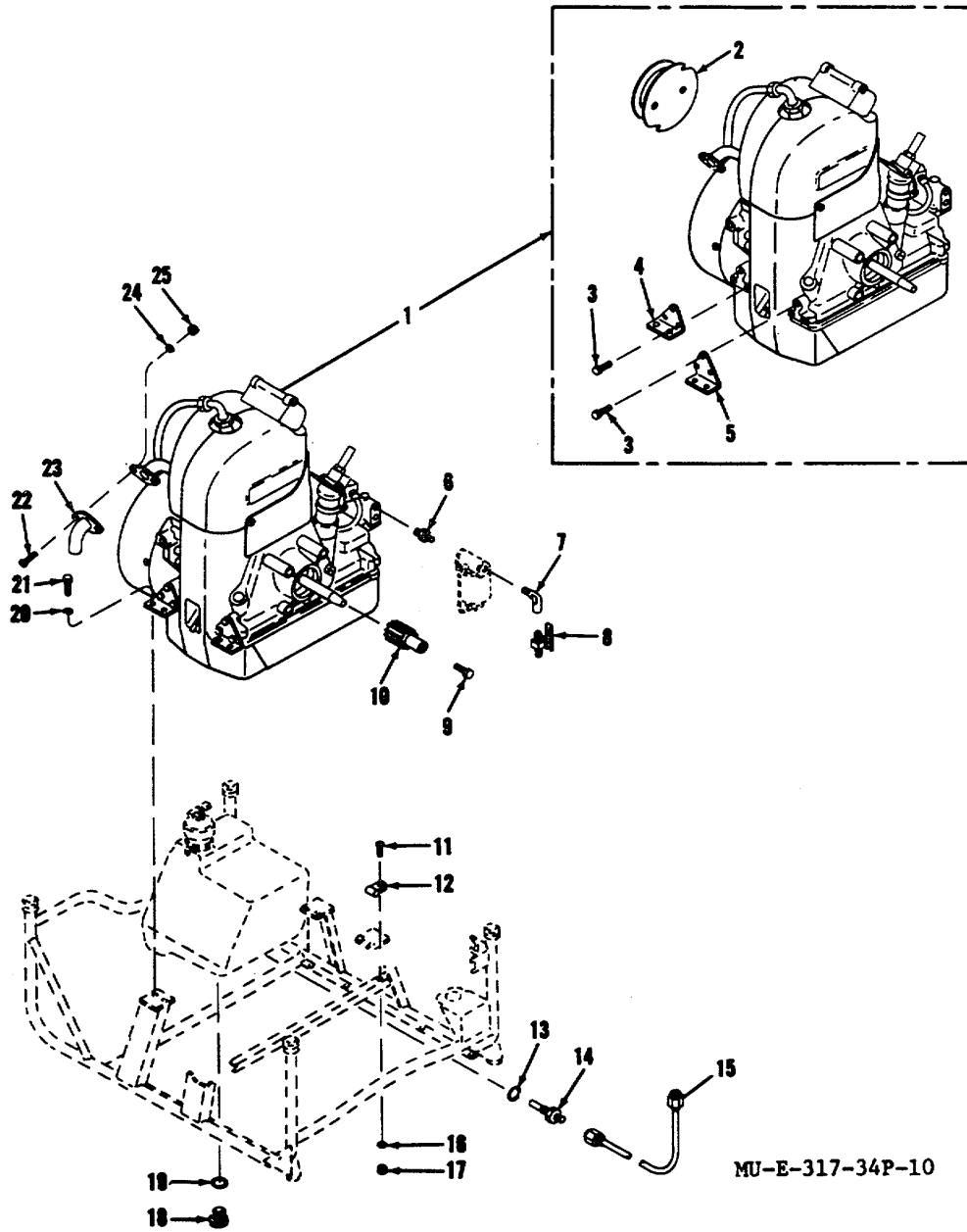


Figure 10. Gasoline engine.

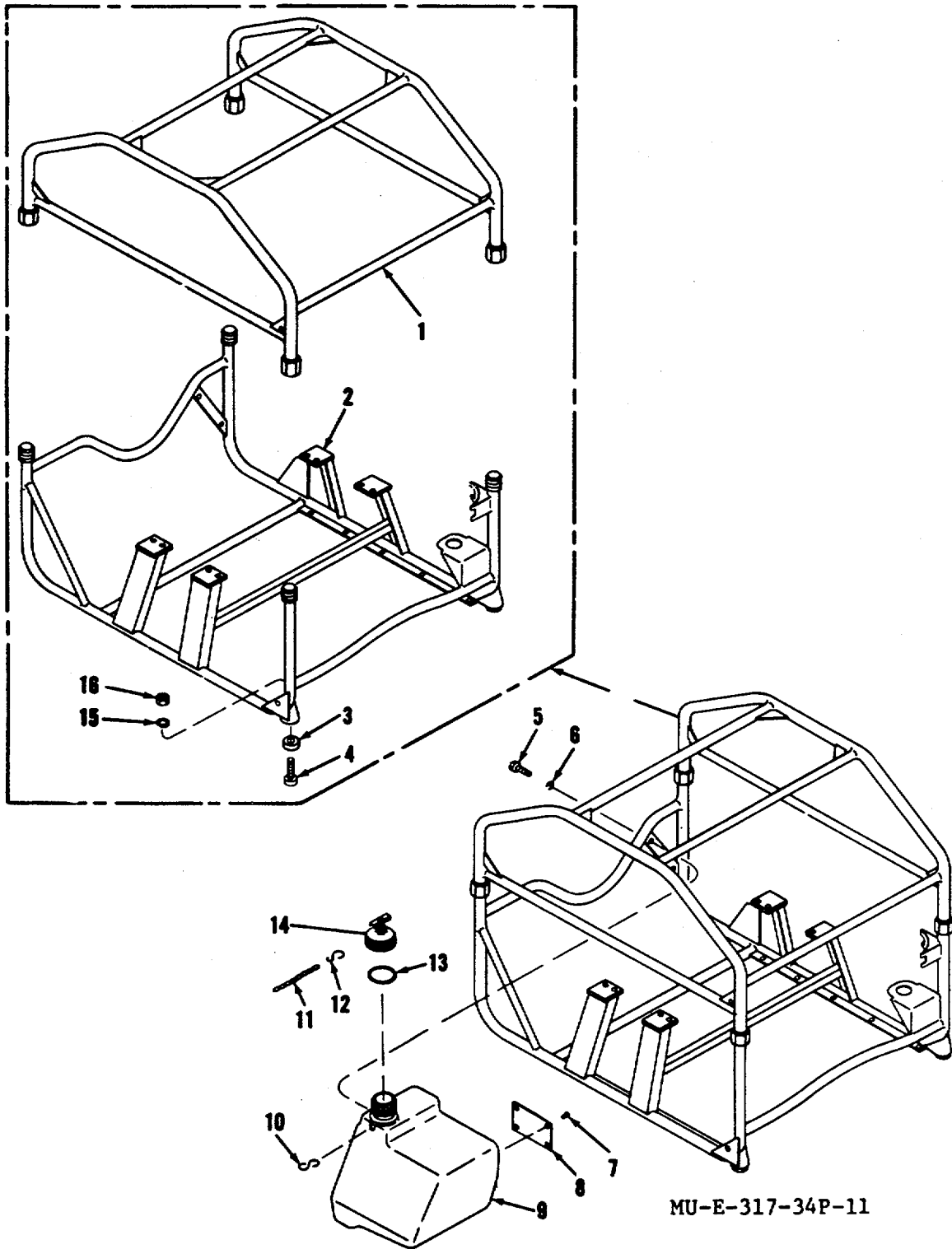


Figure 11. Frame and fuel tank.

**Section IV. INDEX-FEDERAL STOCK NUMBER AND REFERENCE  
NUMBER CROSS-REFERENCE TO FIGURE AND ITEM NUMBER**

<i>Stock Number</i>	<i>Figure No</i>	<i>Item No.</i>	<i>Stock Number</i>	<i>Figure No.</i>	<i>Item No.</i>
1040-062-4574	9	10	4030-063-3979	11	12
1040-062-8575	9	14	4310-084-2928	8	15
1040-081-5129	7	11	4310-969-6632	9	25
1040-081-4079	11	8	4310-970-8430	8	28
1040-083-2606	1	1	4310-972-2315	9	22
1040-083-2607	1	4	4310-972-7671	8	18
1040-083-2608	1	10	4720-062-4332	10	15
1040-083-2614	1	8	4730-186-7797	10	6
1040-083-2615	2	--	4730-186-9961	4	10
1040-083-2616	2	26	4730-186-9963	4	5
1040-083-2618	2	14	4730-203-3132	1	2
1040-084-0436	10	14	4730-231-3026	2	21
1040-084-0438	2	22	4730-231-5605	10	7
1040-084-0439	4	1	4730-240-5906	9	4,26
1040-084-2926	8	2	4730-277-6372	2	20
1040-084-2927	3	4	4730-698-4030	9	27
1040-084-2929	8	19	4730-977-7663	2	13
1040-863-7451	1	5	4820-254-8640	10	8
1040-953-6558	6	11	4820-977-7664	2	2
1040-970-6222	9	13	5305-668-0500	10	21
1040-970-8426	3	6		11	5
1040-971-4919	10	10	5305-081-8511	8	16
1040-9714921	10	4	5305-087-2995	8	11
1040-971-4922	8	9	5305-087-2996	8	5
1040-971-4923	8	13	5305-088-5881	10	9
1040-972-0022	9	15	5305-207-8998	9	38
1040-972-0023	8	29	5305-253-5608	6	12
1040-972-0024	7	--	5305-253-5609	11	7
1040-972-0025	8	--	5305-273-5001	7	1
1040-972-0026	9	--	5305-940-9472	4	3
1040-972-2316	9	34	5305-984-6212	10	22
1040-972-2321	7	8	5306-988-5848	6	5
1040-972-2322	6	--	5305-993-1848	10	11
1040-972-2323	2	--	5305-993-2459	11	4
1040-972-5141	4	11	5306-064-4407	10	3
1040-972-5142	4	4	5306-225-9087	4	8
1040-972-5143	11	2		6	15
1040-972-5144	11	1	5306-879-2800	1	3
1040-972-5146	4	12	5310-887-0255	9	37
1040-976-4980	11	14	5310-087-4571	6	3
1040-974-3737	4	7	5310-141-1795	11	15
1040-974-3740	7	14	5310-167-0662	6	16
1040-974-7351	9	3	5310-209-0786	10	20
1040-976-8981	7	3		11	6
1040-977-7667	3	1	5310-275-3683	2	17
1040-977-7668	3	14	5310-282-7834	2	24
1040-977-9471	6	7	5310-285-7036	8	12
1040-977-9473	8	10	5310-531-9515	8	8
1040-979-9307	5	1	5310-543-5933	10	24
1040-992-1130	6	4	5310-576-5752	10	16
1040-994-7985	11	9	5310-582-5965	7	2
1650-328-3725	9	20		8	6
1650-699-0522	5	2		9	2
2805-714-8552	10	1	5310-595-6211	4	2
2910-083-2620	2	23	5310-616-3056	2	25
2990-970-0003	9	9	5310-685-3744	3	2
2990-971-1366	10	2		9	32
2990-972-2318	10	2S	5310-721-4434	8	7
3110-100-6162	9	21	5310-880-5977	1	6
3110-971-1364	9	12		4	9
3110-971-1365	9	8	5310-902-9369	3	5
4010-958-0633	11	11	5310-934-9751	10	17
4020-233-6555	1	9	5310-934-9760	10	25

<i>Stock Number</i>	<i>Figure No.</i>	<i>Item No.</i>	<i>Reference No.</i>	<i>Mfg. Code</i>	<i>Figure No.</i>	<i>Item No.</i>	
5310-941-6440	3	3	MS122055	96906	8	12	
5310-982-4988	1	7	MS15795-803	96906	4	2	
	11	16	MS15795-811	96906	1	6	
5320-117-6803	3	9			4	9	
5330-081-3986	2	18	MS16625-1112	96906	9	30	
5330-081-5837	8	14	MS19059-46	96906	9	21	
5330-246-6403	2	19	MS20470D3-5	96906	3	9	
5330-248-3844	10	13	MS20822-4D	96906	4	10	
5330-263-8031	10	19	MS208224D	96906	4	5	
5330-265-1075	11	13	MS20995C32	96906	2	11	
5330-531-2070	2	12			6	14	
5330-584-0150	9	39	MS21045C4	96906	1	7	
5330-835-8974	6	18			11	16	
5330-953-4559	9	35	MS21083D08	96906	3	3	
5340-057-2900	10	12	MS21083N8	96906	3	5	
5340-087-3509	9	18	MS21318-13	96906	11	7	
5340-087-4572	9	24	MS21318-9	96906	3	12	
5340-971-4920	10	5	MS24621-2	96906	2	16	
5340-977-7247	11	3	MS24629-11	96906	9	38	
5365-058-1064	9	16	MS24677-26	96906	8	5	
5365-087-8735	9	23	MS24677-29	96906	8	11	
5365-289-3070	10	18	MS24677-36	96906	7	1	
5365-289-4932	8	23	MS28773-04	96906	2	19	
5365-801-2500	9	30	MS29512-08	96906	10	19	
5365-950-2654	9	36	MS29513-113	96906	10	13	
6680-970-0004	9	40	MS29513-218	96906	11	19	
9505-293-4208	6	14	MS29561-119	96906	6	17	
			MS35206-265	96906	10	22	
			MS35207-265	96906	10	11	
<i>Reference No.</i>	<i>Mfg. Code</i>	<i>Figure No.</i>	<i>Item No.</i>	MS35207-283	96906	11	4
AN320C4	88044	8	7	MS35275-278	96906	4	3
AN6289-4	88044	2	20	MS35333-39	96906	10	16
AN737TW98-114	88044	1	2	MS35333-73	96906	10	24
AN814-10DL	88044	8	23	MS35335-33	96906	10	20
AN816-4D	88044	9	4,26			11	6
AN833-4	88044	2	21	MS35335-40	96906	2	17
AN911-1	88044	10	6	MS35335-41	96906	2	25
AN914-1	88044	10	7	MS35337-43	96906	6	16
AN924-10D	88044	2	24	MS35338-44	96906	7	2
AN929-4S	81352	9	27			8	6
AN960C416	88044	8	8			9	2
AN960C8	88044	3	2	MS35649-204	96906	10	25
		9	32	MS35650-302	96906	10	17
AN96D416	88044	11	15	MS9015-08	96906	10	18
A68-13-1523	81361	11	3	MS90725-6	96906	10	21
A81-1-882	81361	11	10			11	5
B68-13-1540	81361	10	5	MS90725-6	96906	9	1
B68-13-1541	81361	10	4	MS90726-32	96906	4	8
B68-13-1560	81361	11	14			6	15
B68-13-1566	81361	10	14	NAS617-4	80205	2	12
B68-13-1567	81361	2	22	PH094	77122	3	11
B81-1-526	81361	11	12	PRC271	81348	11	11
B81-1-6878	81361	1	8	1A08-2	97403	10	1
C68-13-1572	81361	10	28	1611208PC17	10001	10	3
D68-13-1532	81361	10	2	206844	33525	9	20
D68-13-1545	81361	2	--	208287	33525	2	9
D68-13-1551	81361	1	1	208290	33525	2	6
D68-13-1570	81361	1	8	208298	33525	2	3
D81-1-6869-1	81361	1	4	211730	33525	2	7
D81-1-6872-1	81361	1	10	211793	33525	2	10
D81-1-6876	81361	1	5	212799	33525	9	22
E68-13-1561	81361	11	9	212800	33525	9	16
E81-8-1548	81361	11	2	212853	33525	9	18
E81-8-1548-1	81361	11	1	213170	33525	7	11
GA5298-1-2-3	33525	9	14	213172	33525	8	2
MIL-C-2533	81349	1	9	213212	33525	8	16

**SECTION IV. INDEX FEDERAL STOCK NUMBER CROSS REFERENCE  
CROSS-REFERENCE TO FIGURE AND ITEM NUMBER**

<u>REFERENCE NO.</u>	<u>MFR CODE</u>	<u>FIG. NO.</u>	<u>ITEM NO.</u>	<u>REFERENCE NO.</u>	<u>MFR CODE</u>	<u>FIG. NO.</u>	<u>ITEM NO.</u>
213213	33525	8	14	803844	33525	7	--
213274	33525	9	24	803844	33525	7	13
213299	33525	10	9	COMPRESSION PLATE			
213347	33525	2	23	803844	33525	7	9
213356	33525	2	13	COMPRESSION PLATE			
213383	33525	6	3	ONE NOTCH			
213397	33525	7	12	803844	33525	7	10
213455	33525	4	6	COMPRESSION PLATE			
213516	33525	3	7	TWO NOTCH			
213840	33525	9	35	803844	33525	7	5
242644-5A	33525	2	5A	COMPRESSION WASHER			
242662-5B	33525	2	SB	803844ORING	33525	7	4
242665-17	33525	6	17	803844	33525	7	6
242667-4A	33525	2	4A	KEYED WASHER			
242668-3A	33525	2	3A	803844	33525	7	7
242683-2A	33525	2	2A	STARRED WASHER			
243595	33525	2	16	803845	33525	9	--
		3	10	803845	33525	9	5
245298	33525	9	36	LARGE O RING			
245362	33525	9	37	803845LARGE SEAL	33525	9	7
245522	33525	8	19	803845	33525	9	28
245726	33525	9	23	MEDIUM ORING			
245733	33525	9	12	803845	33525	9	33
245734	33525	9	8	RETAINING RING			
245775	33525	11	8	803845ROLLPIN	33525	9	11
245805	33525	3	13	803845	33525	9	17
246308	33525	8	10	SMALL ORING			
272198	33525	8	13	803845SMALL SEAL	33525	9	29
272204	33525	8	18	803845SPRING	33525	9	19
272217	33525	10	10	803845	33525	9	6
272258	33525	2	14	WAVED WASHER			
272259	33525	2	26	803955	33525	9	34
272265	33525	7	8	804302	33525	4	13
272404	33525	4	7	841727	33525	8	28
272576	33525	4	1	842172	33525	9	40
272947	33525	6	11	842231	33525	8	15
290625	33525	8	29	842255	33525	9	13
290641	33525	3	6	842258	33525	9	25
290664	33525	3	4	842291	33525	6	4
31515	33525	2	4	842292	33525	8	--
5292-1106	33525	3	8	842292COTTERPIN	33525	8	22
530	79470	10	8	842292FLAT WASHER	33525	8	17
5302-0100	33525	2	5	842292	33525	8	20
5302-0909	33525	2	8	KEYED WASHER			
5303-0600	33525	2	18	842292	33525	8	1
5304-0500	33525	9	39	KEYED WASHER HOLE			
5306-0814	33525	9	31	842292	33525	8	3
5561-1034	33525	6	5	KEYED WASHER, NOTCH			
755S4-2-8	83930	10	12	842292	33525	8	21
802259	33525	5	2	LARGE O RING			
803831	33525	10	15	842292LARGE SHIM	33525	8	4
803842	33525	2	--	842292PISTON RING	33525	8	31
803843	33525	6	--	842292RETAINER	33525	8	26
803843	33525	6	13	842292	33525	8	25
COMPRESSION PLATE				RETAINING RING			
803843DISK	33525	6	10	842292	33525	8	30
803843	33525	6	8	RETAINING RING			
HEAD GASKET				842292SHIM	33525	8	27
803843	33525	6	12	842292	33525	8	24
PLATE GASKET				SMALL ORING			
803843	33525	6	9	842293	33525	6	7
RETAINER PLATE				842294	33525	7	S
803843	33525	6	6	842303	33525	9	9
RETAINING RING				842311	33525	9	10
803843ORING	33525	6	1	842317	33525	3	1
803843SHIM	33525	6	2	842318	33525	3	14



<u>REFERENCE NO.</u>	<u>MFR CODE</u>	<u>FIG. NO.</u>	<u>ITEM NO.</u>	<u>REFERENCE NO.</u>	<u>MFR CODE</u>	<u>FIG. NO.</u>	<u>ITEM. NO</u>
873561	33525	2	1	892133	33525	5	1
873566	33525	8	9	892134	33525	9	15
878732	33525	7	14	892167	33525	4	11
873738-2250	33525	2	2	892168	33525	4	4
873808	33525	9	8	892170	33525	4	12

By Order of the Secretary of the Army:

Official:

VERNE L. BOWERS,  
*Major General, United States Army,  
The Adjutant General.*

W. C. WESTMORELAND,  
*General, United States Army,  
Chief of Staff.*

Distribution:

To be distributed in accordance with DA Form 1228 (qty rqr block No. 63) direct and general support maintenance requirements for Flamethrower, Handling and Service Equipment.

CHANGE  
NO. 1

**Direct Support and General Support  
Maintenance Repair Parts and Special Tools List  
(Including Depot Maintenance Repair Parts  
and Special Tools)  
COMPRESSOR UNIT, RECIPROCATING, POWER-DRIVEN,  
FLAMETHROWER, 3-1/2 CFM, AN-M4  
(FSN 4310-592-8560)**

*Current as of March 1976*

TM 3-1040-210-34P, 26 April 1972, is changed as follows:  
*Page 1, line 7.* Change "FSN 1040-592-8560" to

"FSN 4310-592-8560."  
*Page 1, Section II,* Table of Contents, is superseded as follows:

Group		Page	Illus Figure
100.	Canvas .....		1
200.	Water separator .....	5	2
300	Compressor .....	5	3 through 9
400.	Engine .....	7 through 16	10
500.	Frame and fuel tank .....	16 through 18	11 and 12
		18	

*Page 4, paragraph 7* is superseded as follows:

**7. Recommendations for Maintenance Publications Improvements**

You can improve this manual by recommending improvements using DA Form 2028 (Recommended Changes to Publications and Blank Forms) or by a letter, and mailing directly to Commander, Edgewood Arsenal, Attn: SAREA-DE-ET, Aberdeen Proving Ground, MD 21010. A reply will be furnished direct to you.

*Page 6, column (3), line 30.* Delete NAS617-4 (80205) the second time it appears.

*Page 7, column (3).* Change "GROUP 300 - FAN" to "GROUP 300 - COMPRESSOR."

*Page 8, column (3).* Change "GROUP 400 - COOLER" to "GROUP 300 - Continued."

*Page 9, column (3).* Change "GROUP 500 - COMPRESSOR AND RELIEF VALVE" to "GROUP 300 - Continued."

*Page 16, column (3).* Change "GROUP 600 - ENGINE" to "GROUP 400 - ENGINE."

*Page 18, column (3).* Change "GROUP 700 - FRAME AND FUEL TANK" to "GROUP 500 - FRAME AND FUEL TANK."

*Column (1), line 10.* Change SMR code from "PF" to "XBF."

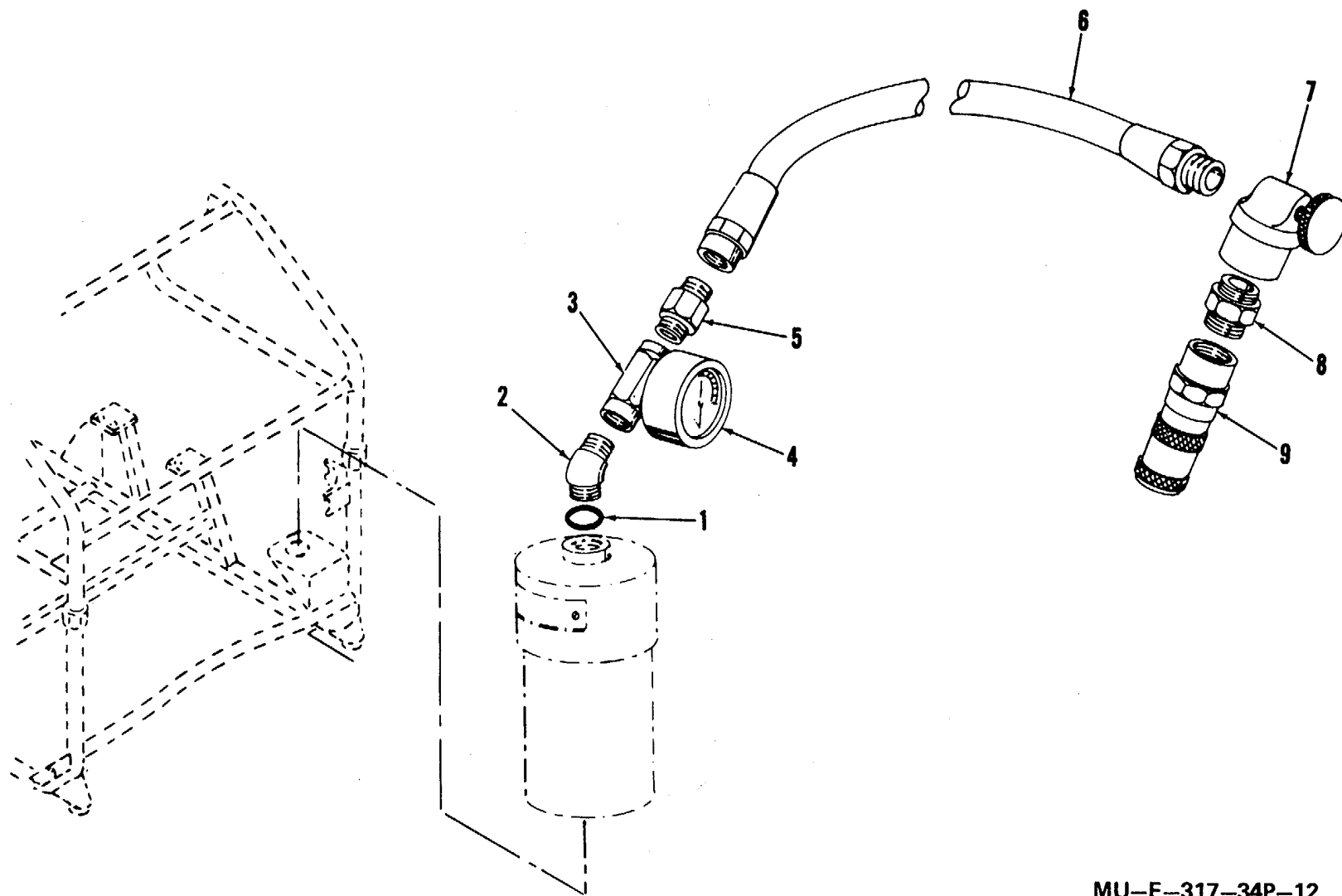
*Column (2), line 10.* Delete the "FSN 1040-081-8079."

*Page 19.* Add the following parts to GROUP 500 - FRAME AND FUEL TANK.

SECTION II

TM 11-5895-201-24P

(1) SMR CODE	(2) FEDERAL STOCK NUMBER	(3) DESCRIPTION REFERENCE NUMBER & MFR CODE    USABLE ON CODE		(4) UNIT OF MEAS	(5) QTY INC IN UNIT	(6) 30 DAYS DS MAINT ALLOWANCE			(7) 30 DAYS GS MAINT ALLOWANCE			(8) 1-YEAR ALW PER 100 EQUIP CNTGCV	(9) DEPOT MAINT ALW PER 100 EQUIP	(10) ILLUSTRATION		
						(a)	(b)	(c)	(a)	(b)	(c)			(a)	(b)	
						1-20	21-50	51-100	1-20	21-50	51-100			FIGURE NO.	ITEM NO.	
		GROUP 500-- Continued														
N P 0	5330-805-2966	CHARGING HOSE PACKING, PREFORMED..... MS28778-4 (96906)		EA	1	*	*	*	*	*	*	*	*	12	1	
N P 0	4730-933-0723	ELBOW, TUBE TO BOSS..... MS51528-A4 (96906)		EA	1	*	*	*	*	*	*	*	*	12	2	
N P 0	4730-084-0435	TEE, PIPE TO TUBE..... B68-13-1553 (81361)		EA	1	*	*	*	*	*	*	*	*	12	3	
N P 0	6685-850-1322	GAGE, PRESSURE..... D81-6-376 (81361)		EA	1	*	*	*	*	*	*	*	*	12	4	
N P 0	4730-618-3410	ADAPTER..... B81-3-30 (81361)		EA	1	*	*	*	*	*	*	*	*	12	5	
N P 0	4720-289-2630	HOSE ASSEMBLY, NONMETALLIC..... B81-3-65 (81361)		EA	1	*	*	*	*	*	*	*	*	12	6	
N P 0	1040-759-7352	VALVE ASSEMBLY..... C81-6-407 (81361)		EA	1	*	*	*	*	*	*	*	*	12	7	
N P 0	4730-851-2278	ADAPTER, STRAIGHT, PIPE TO TUBE..... B81-6-384 (81361)		EA	1	*	*	*	*	*	*	*	*	12	8	
N P 0	4730-863-0774	COUPLING HALF, QUICK DISCONNECT..... B81-6-385 (81361)		EA	1	*	*	*	*	*	*	*	*	12	9	



MU-E-317-34P-12

Figure 12. Charging Hose

**Section IV. FEDERAL STOCK NUMBER AND REFERENCE NUMBER  
CROSS-REFERENCE TO FIGURE AND ITEM NUMBER**

<u>STOCK NUMBER</u>	<u>FIG. No.</u>	<u>ITEM No.</u>	<u>STOCK NUMBER</u>	<u>FIG. No.</u>	<u>ITEM No.</u>
1040-062-8574	9	10	1040-970-6222	9	13
1040-062-8575	9	14	1040-970-8426	3	6
1040-081-5129	7	11	1040-971-4919	10	10
1040-083-2606	1	1	1040-971-4921	10	4
1040-083-2607	1	4	1040-971-4922	8	9
1040-083-2608	1	10	1040-971-4923	8	13
1040-083-2614	1	8	1040-972-0022	9	15
1040-083-2615	2	-	1040-972-0023	8	29
1040-083-2616	2	26	1040-972-0024	7	-
1040-083-2618	2	14	1040-972-0025	8	-
1040-084-0436	10	14	1040-972-0026	9	-
1040-084-0438	2	22	1040-972-2316	9	34
1040-084-0439	4	1	1040-972-2321	7	8
1040-084-2926	8	2	1040-972-2322	6	-
1040-084-2927	3	4	1040-972-2323	2	-
1040-084-2929	8	19	1040-972-5141	4	11
1040-759-7352	12	7	1040-972-5142	4	4
1040-863-7451	1	5	1040-972-5143	11	2
1040-921-5291	11	1	1040-972-5144	11	1
1040-921-5298	11	2	1040-972-5146	4	12
1040-953-0558	6	11	1040-976-8980	11	14

**Section IV. FEDERAL STOCK NUMBER AND REFERENCE NUMBER  
CROSS-REFERENCE TO FIGURE AND ITEM NUMBER**

<u>STOCK NUMBER</u>	<u>FIG. No.</u>	<u>ITEM No.</u>	<u>STOCK NUMBER</u>	<u>FIG. No.</u>	<u>ITEM No.</u>
1040-974-3737	4	7	4010-958-0633	11	11
1040-974-3740	7	14	4020-233-6555	1	9
1040-974-7351	9	3	4030-063-3979	11	12
1040-976-8981	7	3	4310-084-2928	8	15
1040-977-7667	3	1	4310-969-6632	9	25
1040-977-7668	3	14	4310-970-8430	8	28
1040-977-9471	6	7	4310-972-2315	9	22
1040-977-9473	8	10	4310-972-7671	8	18
1040-979-9307	5	1	4720-062-4332	10	15
1040-992-1130	6	4	4720-289-2630	12	6
1040-994-7985	11	9	4730-084-0435	12	3
1650-328-3725	9	20	4730-186-7797	10	6
1650-699-0522	5	2	4730-186-9961	4	10
2805-714-8552	10	1	4730-186-9963	4	5
2910-083-2620	2	23	4730-203-3132	1	2
2990-970-0003	9	9	4730-231-3026	2	21
2990-971-1366	10	2	4730-231-5605	10	7
2990-972-2318	10	23	4730-240-5905	9	4,26
3110-100-6162	9	21	4730-277-6372	2	20
3110-971-1364	9	12	4730-618-3410	12	5
3110-971-1365	9	8	4730-698-4030	9	27

**Section IV. FEDERAL STOCK NUMBER AND REFERENCE NUMBER  
CROSS-REFERENCE TO FIGURE AND ITEM NUMBER**

<u>STOCK NUMBER</u>	<u>FIG. No.</u>	<u>ITEM No.</u>	<u>STOCK NUMBER</u>	<u>FIG. No.</u>	<u>ITEM No.</u>
4730-851-2278	12	8	5306-225-9087	4 6	8 15
4730-863-0774	12	9	5306-879-2800	1	3
4730-933-0723	12	2	5310-087-0255	9	37
4820-254-8640	10	8	5310-087-4571	6	3
4820-977-7664	2	2	5310-141-1795	11	15
5305-068-0500	10 11	21 5	5310-167-0662	6	16
5305-081-8511	8	16	5310-209-0786	10 11	20 6
5305-087-2995	8	11	5310-275-3683	2	17
5305-087-2996	8	5	5310-282-7834	2	24
5305-088-5881	10	9	5310-285-7036	8	12
5305-207-8998	9	38	5310-531 -9515	8	8
5305-253-5608	3	12	5310-543-5933	10	24
5305-253-5609	11	7	5310-576-5752	10	16
5305-273-5001	7	1	5310-582-5965	7 8 9	2 6 2
5305-940-9472	4	3	5310-595-6211	4	2
5305-984-6212	10	22	5310-616-3056	2	25
5305-988-5848	6	5	5310-685-3744	3 9	2 32
5305-993-1848	10	11	5310-721-4434	8	7
5305-993-2459	11	4			
5306-064-8407	10	3			



**Section IV. FEDERAL STOCK NUMBER AND REFERENCE NUMBER  
CROSS-REFERENCE TO FIGURE AND ITEM NUMBER**

<u>STOCK NUMBER</u>	<u>FIG. No.</u>	<u>ITEM No.</u>	<u>STOCK NUMBER</u>	<u>FIG. No.</u>	<u>ITEM No.</u>
5310-880-5977	1 4	6 9	5330-953-0559	9	35
5310-902-9369	3	5	5340-057-2900	10	12
5310-934-9751	10	17	5340-087-3509	9	18
5310-934-9760	10	25	5340-087-4572	9	24
5310-941-6440	3	3	5340-971-4920	10	5
5310-982-4988	1 11	7 16	5340-977-7247	11	3
5320-117-6803	3	9	5365-058-1064	9	16
5330-081-3986	2	18	5365-087-8735	9	23
5330-081-5837	8	14	5365-289-3070	10	18
5330-246-6403	2	19	5365-289-4932	8	23
5330-248-3844	10	13	5365-801-2500	9	30
5330-263-8031	10	19	5365-950-2654	9	36
5330-265-1075	11	13	6680-970-0004	9	40
5330-584-0150	9	39	6685-850-1322	12	4
5330-805-2966	12	1	9505-293-4208	6	14
5330-835-8974	6	18			

**SECTION IV. INDEX FEDERAL STOCK NUMBER CROSS REFERENCE**

**CROSS-REFERENCE TO FIGURE AND ITEM NUMBER**

<u>REFERENCE NO.</u>	<u>MFR CODE</u>	<u>FIG. NO.</u>	<u>ITEM NO.</u>	<u>REFERENCE NO.</u>	<u>MFR CODE</u>	<u>FIG. NO.</u>	<u>ITEM. NO</u>
AN320C4	88044	8	7	B68-13-1566	81361	10	14
AN6289-4	88044	2	20	B68-13-1567	81361	2	22
AN737TW98-114	88044	1	2	B81-1-526	81361	11	12
AN814-10DL	88044	8	23	B81-1-6878	81361	1	3
AN816-4D	88044	9	4,26	B81-3-30	81361	12	5
AN833-4	88044	2	21	B81-3-65	81361	12	6
AN911-1	88044	10	6	B81-6-384	81361	12	8
AN914-1	88044	10	7	B81-6-385	81361	12	9
AN924-10D	88044	2	24	C68-13-1572	81361	10	23
AN929-4S	81352	9	27	C81-6-407	81361	12	7
AN960C416	88044	8	8	D68-13-1532	81361	10	2
AN960C8	88044	3 9	2 32	DS8-13-1545	81361	2	-
AN960-416	88044	11	15	D68-13-1551	81361	1	1
A68-13-1523	81361	11	3	D68-13-1570	81361	1	8
A81-1-882	81361	11	10	D81-1-6869-1	81361	1	4
B68-13-1540	81361	10	5	D81-1-6872-1	81361	1	10
B68-13-1541	81361	10	4	D81-1-6876	81361	1	5
B68-13-1553	81361	12	3	D81-6-376	81361	12	4
B68-13-1560	81361	11	14	E68-13-1561	81361	11	9
				E68-13-1587	81361	11	2

**SECTION IV. INDEX FEDERAL STOCK NUMBER CROSS REFERENCE**

**CROSS-REFERENCE TO FIGURE AND ITEM NUMBER**

<u>REFERENCE NO.</u>	<u>MFR CODE</u>	<u>FIG. NO.</u>	<u>ITEM NO.</u>	<u>REFERENCE NO.</u>	<u>MFR CODE</u>	<u>FIG. NO.</u>	<u>ITEM. NO</u>
E68-13-1590	81361	11	1	MS24677-26	96906	8	5
GA5298-1-2-3	33525	9	14	MS24677-29	96906	8	11
MIL-C-2533	81349	1	9	MS24677-36	96906	7	1
MS122055	96906	8	12	MS28773-04	96906	2	19
MS15795-803	96906	4	2	MS28778-4	96906	12	1
MS15795-811	96906	1	6	MS29512-08	96906	10	19
		4	9	MS29513-113	96906	10	13
MS16625-1112	96906	9	30	MS29513-218	96906	11	13
MS19059-46	96906	9	21	MS29561-119	96906	6	17
MS20470D3-5	96906	3	9	MS35206-265	96906	10	22
MS20822-4D	96906	4	10	MS35207-265	96906	10	11
MS20822-4-4D	96906	4	5	MS35207-283	96906	11	4
MS20995C32	96906	2	11	MS35275-278	96906	4	3
		6	14	MS35333-39	96906	10	16
MS21045C4	96906	1	7	MS35333-73	96906	10	24
		11	16	MS35335-33	96906	10	20
MS21083D08	96906	3	3			11	6
MS21083N8	96906	3	5	MS35335-40	96906	2	17
MS21318-13	96906	11	7	MS35335-41	96906	2	25
MS21318-9	96906	3	12	MS35337-43	96906	6	16
MS24621-2	96906	2	15				
MS24629-11	96906	9	38				

**SECTION IV. INDEX FEDERAL STOCK NUMBER CROSS REFERENCE**

**CROSS-REFERENCE TO FIGURE AND ITEM NUMBER**

<u>REFERENCE NO.</u>	<u>MFR CODE</u>	<u>FIG. NO.</u>	<u>ITEM NO.</u>	<u>REFERENCE NO.</u>	<u>MFR CODE</u>	<u>FIG. NO.</u>	<u>ITEM. NO</u>
MS35338-44	96906	7	2	212799	33525	9	22
		8	6				
		9	2	212800	33525	9	16
MS35649-204	96906	10	25	212853	33525	9	18
MS35650-302	96906	10	17	213170	33525	7	11
MS51528-A4	96906	12	2	213172	33525	8	2
MS9015-08	96906	10	18	213212	33525	8	16
MS90725-3	96906	10	21	213213	33525	8	14
		11	5				
				213274	33525	9	24
MS90725-6	96906	9	1	213299	33525	10	9
MS90726-32	96906	4	8	213347	33525	2	23
		6	15				
PHO94	77122	3	11	213383	33525	6	3
PRC271	81348	11	11	213397	33525	7	12
IA08-2	97403	10	1	213455	33525	4	6
1611208PC17	10001	10	3	213516	33525	3	7
206844	33525	9	20	213840	33525	9	35
208287	33525	2	9	242644-5A	33525	2	5A
208290	33525	2	6	242662-5B	33525	2	5B
208298	33525	2	3	242665-17	33525	6	17
211730	33525	2	7	242667-4A	33525	2	4A
211793	33525	2	10	242668-3A	33525	2	3A

**SECTION IV. INDEX FEDERAL STOCK NUMBER CROSS REFERENCE**

**CROSS-REFERENCE TO FIGURE AND ITEM NUMBER**

<u>REFERENCE NO.</u>	<u>MFR CODE</u>	<u>FIG. NO.</u>	<u>ITEM NO.</u>	<u>REFERENCE NO.</u>	<u>MFR CODE</u>	<u>FIG. NO.</u>	<u>ITEM. NO</u>
242683-2A	33525	2	2A	290625	33525	8	29
243595	33525	2	16				
		3	10	290641	33525	3	6
245298	33525	9	36	290664	33525	3	4
245362	33525	9	37	31515	33525	2	4
245522	33525	8	19	5292-1106	33525	3	8
245726	33525	9	23	530	79470	10	8
245733	33525	9	12	5302-0100	33525	2	5
245734	33525	9	8	5302-0909	33525	2	8
245775	33525	11	8	5303-0600	33525	2	18
245805	33525	3	13	5304-0500	33525	9	39
246308	33525	8	10	5306-0814	33525	9	31
272198	33525	8	13	5561-1034	33525	6	5
272204	33525	8	18	755S4-2-8	83930	10	12
272217	33525	10	10	802259	33525	5	2
272258	33525	2	14	803831	33525	10	15
272259	33525	2	26	803842	33525	2	-
272265	33525	7	8	803843	33525	6	-
						6	13
272404	33525	4	7				
272576	33525	4	1	COMPRESSION PLATE 803843DISK	33525	6	10
272947	33525	6	11	803843	33525	6	8

**SECTION IV. INDEX FEDERAL STOCK NUMBER CROSS REFERENCE**

**CROSS-REFERENCE TO FIGURE AND ITEM NUMBER**

<u>REFERENCE NO.</u>	<u>MFR CODE</u>	<u>FIG. NO.</u>	<u>ITEM NO.</u>	<u>REFERENCE NO.</u>	<u>MFR CODE</u>	<u>FIG. NO.</u>	<u>ITEM. NO</u>
HEADGASKET 803843	33525	6	12	803845	33525	9	5
PLATE GASKET 803843	33525	6	9	LARGE O RING 803845 LARGE SEAL33525		9	7
RETAINER PLATE 803843	33525	6	6	803845	33525	9	28
RETAINING RING 803843 O RING	33525	6	1	MEDIUM O RING 803845	33525	9	33
803843 SHIM	33525	6	2	RETAINING RING 803845 ROLL PIN 33525		9	11
803844	33525	7	-	803845	33525	9	17
803844	33525	7	13	SMALL O RING 803845 SMALL SEAL 33525		9	29
COMPRESSION PLATE 803844	33525	7	9	803845 SPRING	33525	9	19
COMPRESSION PLATE ONE NOTCH 803844	33525	7	10	803845	33525	9	6
COMPRESSION PLATE TWO NOTCH 803844	33525	7	5	WAVED WASHER 803955	33525	9	34
COMPRESSION WASHER 803844 O RING	33525	7	4	804302	33525	4	13
803844	33525	7	6	841727	33525	8	28
KEYED WASHER 803844	33525	7	7	842172	33525	9	40
STARRED WASHER 803845	33525	9	-	842231	33525	8	15
				842255	33525	9	13
				842258	33525	9	25
				842291	33525	6	4
				842292	33525	8	-

**SECTION IV. INDEX FEDERAL STOCK NUMBER CROSS REFERENCE**

**CROSS-REFERENCE TO FIGURE AND ITEM NUMBER**

<u>REFERENCE NO.</u>	<u>MFR CODE</u>	<u>FIG. NO.</u>	<u>ITEM NO.</u>	<u>REFERENCE NO.</u>	<u>MFR CODE</u>	<u>FIG. NO.</u>	<u>ITEM. NO</u>
842292 COTTER PIN 33525		8	22	842294	33525	7	3
842292 FLAT WASHER 33525		8	17	842303	33525	9	9
842292	33525	8	20	842311	33525	9	10
KEYED WASHER 842292	33525	8	1	842317	33525	3	1
KEYED WASHER HOLE 842292	33525	8	3	842318	33525	3	14
KEYED WASHER, NOTCH 842292	33525	8	21	873561	33525	2	1
LARGE O RING 842292 LARGE SHIM 33525		8	4	873566	33525	8	9
842292 PISTON RING 33525		8	31	873732	33525	7	14
842292 RETAINER 33525 8		26	892133	873738-2250	33525	2	2
842292	33525	8	25	873808	33525	9	3
RETAINING RING 842292	33525	8	30	33525	5	1	
RETAINING RING 842292 SHIM	33525	8	27	892134	33525	9	15
842292	33525	8	24	892167	33525	4	11
SMALL O RING 842293	33525	6	7	892168	33525	4	4
				892170	33525	4	12

*By Order of the Secretary of the Army:*

Official:

FRED C. WEYAND  
*General, United States Army*  
*Chief of Staff*

PAUL T. SMITH  
*Major General, United States Army*  
*The Adjutant General*

DISTRIBUTION:

To be distributed in accordance with DA Form 12-28, Direct and General Support maintenance requirements for Flamethrower, Service Unit Compressors

 U.S. GOVERNMENT PRINTING OFFICE ; 1991 0 - 281-486 (42955)



RECOMMENDED CHANGES TO EQUIPMENT TECHNICAL PUBLICATIONS



THEN... JOT DOWN THE DOPE ABOUT IT ON THIS FORM. CAREFULLY TEAR IT OUT, FOLD IT AND DROP IT IN THE MAIL!

**SOMETHING WRONG WITH THIS PUBLICATION?**

FROM: (PRINT YOUR UNIT'S COMPLETE ADDRESS)

DATE SENT

PUBLICATION NUMBER

PUBLICATION DATE

PUBLICATION TITLE

BE EXACT... PIN-POINT WHERE IT IS

PAGE NO.	PARA-GRAPH	FIGURE NO.	TABLE NO.
----------	------------	------------	-----------

IN THIS SPACE TELL WHAT IS WRONG AND WHAT SHOULD BE DONE ABOUT IT:

TEAR ALONG PERFORATED LINE

PRINTED NAME, GRADE OR TITLE, AND TELEPHONE NUMBER

SIGN HERE:

DA FORM 2028-2  
1 JUL 79

PREVIOUS EDITIONS ARE OBSOLETE.

P.S.—IF YOUR OUTFIT WANTS TO KNOW ABOUT YOUR RECOMMENDATION MAKE A CARBON COPY OF THIS AND GIVE IT TO YOUR HEADQUARTERS.

**PIN: 024136-001**